

## World Cup 2010, South Africa - Departure W1

June 7, 2010 – June 21, 2010

**\$18,089**

**CALL TODAY:**

**Linda Terrill, Travel Advisor**

Luxury Hotel Specialist & Accredited Virtuoso Consultant  
Independent Associate, Sterling Brownell Travel, A Virtuoso Agency

**800-863-9067**

### Trip Highlights

- Five Star Hotels in South Africa
- A 5 night premier wildlife safari experience in Zambia's Luangwa National Park and Mosi-oa-Tunya National Park together with a night at the incredible Victoria Falls
- Invitations to attend 3 guaranteed group matches in the VIP FIFA Business Seat section as a guest of LAFC.
- Select from a range of the finest South African touring Experiences on a day-by-day basis before you depart or even while you are in country.
- Dedicated on-site team at your disposal to look after you on an individual basis while in South Africa

### Full Description

You are invited to attend the World Cup 2010 in South Africa!

For the first time ever, the continent of Africa is hosting the world's most prestigious global sporting event - the World Cup. South Africa, with its breathtaking natural beauty, vibrant modern cities and a wildly enthusiastic young nation eager to show you the time or your life, welcomes you to this singular event where the world's best football (soccer) teams will battle it out under the magnificent African skies for the ultimate football accolade: "2010 World Champions".

This unique trip includes all the elements that make this simply the very best way to experience this phenomenal event; The finest hotels, the very best five night safari experience, including Victoria Falls and VIP seating at the matches as the special guests of LAFC, the home grown Foundation in Pasadena, CA. LAFC is doing inspiring things in Southern Africa and back here in the US to bring sporting opportunities to young people. Our team here in the US will ensure that the planning of your trip will be easy and trouble free and our team on the ground in South Africa will cater to your every need and ensure a World Cup African experience to exceed your wildest expectations!

### Included:

- All accommodation on a two person sharing basis as per the itinerary
- Four night Safari with Wilderness Safaris at Kalamu Lagoon Camp and Puku Ridge Camp including all air transfers - includes all meals, drinks and laundry.
- One night at Victoria Falls – Toka Leya Camp
- Invitations to the matches as indicated on the itinerary in VIP FIFA Business Seats as guests of LAFC
- All transport services and guide services as indicated in the itinerary
- All internal air transportation in South Africa including match day flights where matches are being played in a city other than the one where we have accommodation that day
- All Meals as per the itinerary indicated as B, L, D
- Services of On-Site team in South Africa to handle any requests or issues while in country

### Not Included:

- International Air fares from your home city and return
- Gratuities
- Meals not indicated as (B,L,D) in the itinerary
- Hotel incidentals such as telephone, in room dining, mini bar and laundry
- Optional Match tickets for matches other than those indicated in the itinerary

## Day by Day Itinerary

**June 7: Johannesburg** - Arrive Johannesburg. Our on-site team will meet you and transfer you to your hotel.

D'Oreale Grande Hotel

**June 8: Toka Leya, Livingstone** - Transfer early this morning to Johannesburg airport for a flight to Livingstone. You will be met by on-site team who will transfer you to Toka Leya Camp.

Toka Leya Camp is situated on the banks of the Zambezi River in the western sector of the Mosi-Oa-Tunya National Park, some 12km up from the Victoria Falls, one of the Seven Natural Wonders of the World.

Accommodation consists of 12 safari-style tents, each en-suite with a view of the magnificent Zambezi River. The camp's dining and bar area are under a canopy of trees overlooking the River and there is swimming pool.

Activities include a tour of the Falls on the Zambian side, game drives, river cruises, guided walks and fishing. Other activities on offer in the area at an additional charge include sunset cruises, helicopter flights, micro-lighting, canoeing, jet boating, white water rafting and fishing amongst others.

At 1708 metres wide, Victoria Falls is the most expansive curtain of water in the world and drops more than 100 metres into the sheer Zambezi Gorge. The Tonga and Makalolo peoples lived here for centuries before the Falls were 'discovered' by David Livingstone in 1855, who named them after his queen. Its local name - after which the national park is named - is Mosi-Oa-Tunya, "the Smoke that Thunders," which describes accurately the huge spirals of spray that can be seen 30km away.

Located in the south-west corner of Zambia, the Victoria Falls and the Zambezi River are the central points in an area of spectacular scenic beauty: from the Falls themselves to the broad, picturesque course of the Zambezi River upstream, the rainforest adjacent and the stark jagged gorge downstream, the power and timelessness of nature's forces are evident throughout.

Toka Leya Camp (B, L, D)

**June 9 - 12: Puku Ridge Tented Camp/Kalamu Lagoon Camp, Zambia** - After a leisurely breakfast we transfer to Livingstone Airport where we board a private charter for a scenic flight to Mfuwe and the Luangwa National Park.

At Mfuwe the group of 16 guests will split into two smaller groups of 8 passengers each. Group 1 will depart by road transfer to Puku Ridge Tented Camp and Group 2 will depart by air transfer to Kalamu Lagoon Camp. After two nights the groups will exchange Camps for an additional two night stay.

Puku Ridge Tented Camp is a real wilderness experience under canvas with attention to luxury and comfort and emphasis on exciting wildlife opportunities. This superb 12 bed tented safari camp is located in a remote wildlife area in South Luangwa National Park will, on a ridge overlooking spectacular game rich floodplains. For millennia, this low, rocky ridge has overlooked the wide, water-rich valley. From this vantage point among the trees, predators and hunters would quietly observe the prolific hunting grounds spread out below. Visitors come to Puku Ridge to revel in the abundance of wildlife. Game to be seen includes elephant, lion, leopard, wild dog, buffalo and giraffe. The diverse wildlife along the dambo offers great opportunities for photography, whether you choose to explore on foot with a keen-eyed guide, or range further afield in a safari vehicle. Guided walks, game drives and night drives are conducted by armed professional safari guides. In the evenings, you dine with the night sounds of Africa for a soundtrack.

Puku Ridge inhabits a remote world of its own, watching the ancient patterns of life and survival while treating its visitors to enjoyably civilised hospitality. The camp is small and intimate, built unobtrusively close to the wild. It is a twelve-bed tented safari camp with six spacious walk-in canvas safari tents with a wrap around view of the flood plains below. Well-lit pathways cleared of undergrowth will connect the tents to the main bar/lounge. The natural vegetation has been left as undisturbed as possible.

Kalamu Lagoon Camp is situated in the Luamfwa Concession in the southern sector of the South Luangwa National Park. The area covers about 9 050 sq km of the Luangwa Valley floor, which varies from about 500m to 800m above sea level. Near the banks of the Luangwa the land is fairly flat, and mostly covered with mature woodlands. There are few dense shrubberies but also open areas where beautiful tall trees stand, shading a mixture of small bushes and grassland.

South Luangwa is a nature-lover's paradise that offers both unique bird watching and exciting game viewing. A secretive leopard might be spotted in the dense undergrowth or a herd of buffalo seen drinking at an old oxbow lake framed by giant sausage trees. Puku, impala and waterbuck are the most conspicuous mammals while bushbuck and Sharpe's grysbok are regularly seen in the denser vegetation. Lion, spotted hyaena and crocodiles head up the food chain here and a plethora of hippo congregate in the Luangwa River. The Luangwa's often-tuskless elephant can be seen foraging for illala palm fruit or wading through the river and night drives here offer not only the chance of that elusive leopard but also creatures like genet, civet, elephant shrews and white-tailed mongooses. Thornicroft's giraffe is endemic to the Valley and yellow baboons are regularly seen around the camp.

Accommodation consists of 8 safari-style reed and canvas tents, each en-suite with both an indoor and outdoor shower. The camp's dining and bar area are under a canopy of giant ebony trees overlooking a beautiful permanent lagoon just off the (South) Luangwa River. A pool and viewing deck area located to the side of the camp offer spectacular views of the lagoon. South Luangwa is renowned as the best walking destination in Africa and

guests have the choice to explore the Luangwa riverine vegetation and adjacent dambos on guided walks. Other activities include day and night game drives.

Puku Ridge and Kalamu Lagoon Camp (B, L, D)

**June 13: Cape Town** - After an early morning game drive and a leisurely breakfast depart Lufupa and fly to Livingstone, with onward connections to Johannesburg and Cape Town. Our ground team will meet you and transfer you to your hotel.

Radisson Blu (B)

**June 14: Cape Town - Group F Match (F1 vs F2)** - Cape Town is always the highlight of a trip to Southern Africa. With its breathtaking scenery, its fascinating multi-cultural persona, its superb restaurants, winelands, forest, ocean and mountain experiences and its friendly hospitable residents, it is one of the great travel delights of the modern world. It is also a wonderful place to become enthralled with the vibrant history of Southern Africa, a narrative that has more twists and turns and larger than life protagonists than a Tom Clancy novel. And the narrative is still being threaded today - this World Cup event is an unfolding part of this story. Our varied Experiences in the Cape will make sure you get the most out of what Sir Francis Drake described as "the fairest Cape in the whole circumference of the earth".

Later this evening attend a group F match at Green Point Stadium. Match time is 8:30 PM. As a guest of LAFC you will enjoy VIP Seating in the special FIFA Business Seat. We have VIP security access and parking to ensure minimal inconvenience getting in and out of the game. One of the most artistic football venues in South Africa, the newly-built Green Point Stadium is situated in one of the much sought-after areas in the city of Cape Town. Special transport will take you to and from the game.

Radisson Blu (B)

**June 15: Cape Town** - You are at leisure to explore the Cape via the wide range of Experiences we offer .

Alternatively, you can take an additional Match:  
Group F (F3 vs F4) Match at Rustenburg  
OR Group G (G3 vs G4) at Port Elizabeth

Radisson Blu (B)

**June 16: Cape Town - Pretoria - Group A Match (A1 vs A3)** - The morning is free to enjoy some of the Experiences in and around Cape Town. Early this afternoon we'll fly to Johannesburg with transportation onward to Pretoria for the Group A match at Loftus Versfeld Stadium. Match time is 8:30 PM. As a guest of LAFC you will enjoy VIP Seating in the special FIFA Business Seat. We have VIP security access and parking to ensure minimal inconvenience getting in and out of the game. After the game we'll fly you back to Cape Town for a late arrival at the hotel.

Radisson Blu (B)

**June 17: Cape Town** - You are at leisure to explore the Cape via the wide range of Experiences we offer .

Alternatively, you can take in additional Matches:  
Group B (B4 vs B2) at Bloemfontein  
OR Group A (A4 vs A2) at Polowane  
OR Group B (B1 vs B3) at Soccer City, Johannesburg

Radisson Blu (B)

**June 18: Cape Town - Johannesburg - Group C Match (C4 vs C2)** - The morning is free relax around the hotel. Later this morning fly to Johannesburg with transportation onward to Ellis Park for the Group C match at Ellis Park. Match time is 4:00 PM. As a guest of LAFC you will enjoy VIP Seating in the special FIFA Business Seat. We have VIP security access and parking to ensure minimal inconvenience getting in and out of the game. After the game we'll fly you back to Cape Town and transfer to the hotel.

Radisson Blu (B)

**June 19 & 20: Cape Town** - Your next two days are at leisure to choose from the Experiences on offer.

Alternatively, you can take in additional Matches on these days as follows;  
June 19: Group D (D4 vs D2) at Rustenburg OR Group E (E1 vs E3) at Durban  
June 20: Group F (F1 vs F3) at Nelspruit OR Group F (F4 vs F2) at Bloemfontein OR Group G (G1 vs G3) at Soccer City Johannesburg.

Radisson Blu (B)

**June 21: Departure** - Transfer to Cape Town Airport for onward flights back to your home city. (B)

## World Cup 2010, South Africa - Departure W2

June 11, 2010 – June 25, 2010

**\$17,129**

**CALL TODAY:**

**Linda Terrill, Travel Advisor**

Luxury Hotel Specialist & Accredited Virtuoso Consultant  
Independent Associate, Sterling Brownell Travel, A Virtuoso Agency

**800-863-9067**

### Trip Highlights

- Five Star Hotels in South Africa
- A 5 night premier wildlife safari experience in Zambia's Luangwa National Park and Mosi-oa-Tunya National Park together with a night at the incredible Victoria Falls
- Invitations to attend 3 guaranteed group matches in the VIP FIFA Business Seat section as a guest of LAFC.
- Select from a range of the finest South African touring Experiences on a day-by-day basis before you depart or even while you are in country.
- Dedicated on-site team at your disposal to look after you on an individual basis while in South Africa

### Full Description

You are invited to attend the World Cup 2010 in South Africa!

For the first time ever, the continent of Africa is hosting the world's most prestigious global sporting event - the World Cup. South Africa, with its breathtaking natural beauty, vibrant modern cities and a wildly enthusiastic young nation eager to show you the time or your life, welcomes you to this singular event where the world's best football (soccer) teams will battle it out under the magnificent African skies for the ultimate football accolade: "2010 World Champions".

This unique trip includes all the elements that make this simply the very best way to experience this phenomenal event; The finest hotels, the very best five night safari experience, including Victoria Falls and VIP seating at the matches as the special guests of LAFC, the home grown Foundation in Pasadena, CA. LAFC is doing inspiring things in Southern Africa and back here in the US to bring sporting opportunities to young people. Our team here in the US will ensure that the planning of your trip will be easy and trouble free and our team on the ground in South Africa will cater to your every need and ensure a World Cup African experience to exceed your wildest expectations!

### Included:

- All accommodation on a two person sharing basis as per the itinerary
- Four night Safari with Wilderness Safaris at Kalamu Lagoon Camp and Puku Ridge Camp including all air transfers - includes all meals, drinks and laundry.
- One night at Victoria Falls – Toka Leya Camp
- Invitations to the matches as indicated on the itinerary in VIP FIFA Business Seats as guests of LAFC
- All transport services and guide services as indicated in the itinerary
- All internal air transportation in South Africa including match day flights where matches are being played in a city other than the one where we have accommodation that day
- All Meals as per the itinerary indicated as B, L, D
- Services of On-Site team in South Africa to handle any requests or issues while in country

### Not Included:

- International Air fares from your home city and return
- Gratuities
- Meals not indicated as (B,L,D) in the itinerary
- Hotel incidentals such as telephone, in room dining, mini bar and laundry
- Optional Match tickets for matches other than those indicated in the itinerary

## Day by Day Itinerary

**June 11 & 12 : Livingstone, Zambia** - Arrive Livingstone. Our on-site team will meet you and transfer to Toka Leya Camp.

Toka Leya Camp is situated on the banks of the Zambezi River in the western sector of the Mosi-Oa-Tunya National Park, some 12km up from the Victoria Falls, one of the Seven Natural Wonders of the World.

Accommodation consists of 12 safari-style tents, each en-suite with a view of the magnificent Zambezi River. The camp's dining and bar area are under a canopy of trees overlooking the River and there is swimming pool.

Activities include a tour of the Falls on the Zambian side, game drives, river cruises, guided walks and fishing. Other activities on offer in the area at an additional charge include sunset cruises, helicopter flights, micro-lighting, canoeing, jet boating, white water rafting and fishing amongst others.

At 1708 metres wide, Victoria Falls is the most expansive curtain of water in the world and drops more than 100 metres into the sheer Zambezi Gorge. The Tonga and Makalolo peoples lived here for centuries before the Falls were 'discovered' by David Livingstone in 1855, who named them after his queen. Its local name - after which the national park is named - is Mosi-Oa-Tunya, "the Smoke that Thunders," which describes accurately the huge spirals of spray that can be seen 30km away.

Located in the south-west corner of Zambia, the Victoria Falls and the Zambezi River are the central points in an area of spectacular scenic beauty: from the Falls themselves to the broad, picturesque course of the Zambezi River upstream, the rainforest adjacent and the stark jagged gorge downstream, the power and timelessness of nature's forces are evident throughout.

Toka Leya Camp (B, L, D)

**June 13 - 16: Puku Ridge Tented Camp/Kalamu Lagoon Camp, Zambia** - After a leisurely breakfast we transfer to Livingstone Airport where we board a private charter for a scenic flight to Mfuwe and the Luangwa National Park.

At Mfuwe the group of 16 guests will split into two smaller groups of 8 passengers each. Group 1 will depart by road transfer to Puku Ridge Tented Camp and Group 2 will depart by air transfer to Kalamu Lagoon Camp. After two nights the groups will exchange Camps for an additional two night stay.

Puku Ridge Tented Camp is a real wilderness experience under canvas with attention to luxury and comfort and emphasis on exciting wildlife opportunities. This superb 12 bed tented safari camp is located in a remote wildlife area in South Luangwa National Park will, on a ridge overlooking spectacular game rich floodplains. For millennia, this low, rocky ridge has overlooked the wide, water-rich valley. From this vantage point among the trees, predators and hunters would quietly observe the prolific hunting grounds spread out below. Visitors come to Puku Ridge to revel in the abundance of wildlife. Game to be seen includes elephant, lion, leopard, wild dog, buffalo and giraffe. The diverse wildlife along the dambo offers great opportunities for photography, whether you choose to explore on foot with a keen-eyed guide, or range further afield in a safari vehicle. Guided walks, game drives and night drives are conducted by armed professional safari guides. In the evenings, you dine with the night sounds of Africa for a soundtrack.

Puku Ridge inhabits a remote world of its own, watching the ancient patterns of life and survival while treating its visitors to enjoyably civilised hospitality. The camp is small and intimate, built unobtrusively close to the wild. It is a twelve-bed tented safari camp with six spacious walk-in canvas safari tents with a wrap around view of the flood plains below. Well-lit pathways cleared of undergrowth will connect the tents to the main bar/lounge. The natural vegetation has been left as undisturbed as possible.

Kalamu Lagoon Camp is situated in the Luamfwa Concession in the southern sector of the South Luangwa National Park. The area covers about 9 050 sq km of the Luangwa Valley floor, which varies from about 500m to 800m above sea level. Near the banks of the Luangwa the land is fairly flat, and mostly covered with mature woodlands. There are few dense shrubberies but also open areas where beautiful tall trees stand, shading a mixture of small bushes and grassland.

South Luangwa is a nature-lover's paradise that offers both unique bird watching and exciting game viewing. A secretive leopard might be spotted in the dense undergrowth or a herd of buffalo seen drinking at an old oxbow lake framed by giant sausage trees. Puku, impala and waterbuck are the most conspicuous mammals while bushbuck and Sharpe's grysbok are regularly seen in the denser vegetation. Lion, spotted hyaena and crocodiles head up the food chain here and a plethora of hippo congregate in the Luangwa River. The Luangwa's often-tuskless elephant can be seen foraging for illala palm fruit or wading through the river and night drives here offer not only the chance of that elusive leopard but also creatures like genet, civet, elephant shrews and white-tailed mongooses. Thornicroft's giraffe is endemic to the Valley and yellow baboons are regularly seen around the camp.

Accommodation consists of 8 safari-style reed and canvas tents, each en-suite with both an indoor and outdoor shower. The camp's dining and bar area are under a canopy of giant ebony trees overlooking a beautiful permanent lagoon just off the (South) Luangwa River. A pool and viewing deck area located to the side of the camp offer spectacular views of the lagoon. South Luangwa is renowned as the best walking destination in Africa and guests have the choice to explore the Luangwa riverine vegetation and adjacent dambos on guided walks. Other activities include day and night game drives.

Puku Ridge and Kalamu Lagoon Camp (B, L, D)

**June 17: Cape Town** - After an early morning game drive and a leisurely breakfast depart Lufupa and fly to Livingstone, with onward connections to Johannesburg and Cape Town. Our on-site team will meet you and transfer you to your hotel.

Radisson Blu (B)

**June 18: Cape Town** - Cape Town is always the highlight of a trip to Southern Africa. With its breathtaking scenery, its fascinating multi-cultural persona, its superb restaurants, winelands, forest, ocean and mountain experiences and its friendly hospitable residents, it is one of the great travel delights of the modern world. It is also a wonderful place to become enthralled with the vibrant history of Southern Africa, a narrative that has more twists and turns and larger than life protagonists than a Tom Clancy novel. And the narrative is still being threaded today - this World Cup event is an unfolding part of this story. Our varied Experiences in the Cape will make sure you get the most out of what Sir Francis Drake described as "the fairest Cape in the whole circumference of the earth".

Alternatively, you can take in the additional Group E (D1 vs D3) at Nelson Mandela Bay/Port Elisabeth.

Radisson Blu (B)

**June 19: Cape Town - Pretoria - Group E Match (E4 vs E2)** - The morning is free to enjoy some of the Experiences in and around Cape Town. Early this afternoon this evening attend the Group E match at Loftus Versfeld Stadium in Pretoria. Match time is 8:30 PM. As a guest of LAFC you will enjoy VIP Seating in the special FIFA Business Seat. We have VIP security access and parking to ensure minimal inconvenience getting in and out of the game. After the game we'll fly you back to Cape Town for a late arrival at the hotel.

Radisson Blu (B)

**June 20: Cape Town** - Today is at leisure to explore the Cape via the wide range of Experiences we offer.

Alternatively, you can take in additional Matches;

Group F (F1 vs F3) at Nelspruit

OR Group F (F4 vs F2) at Bloemfontein

OR Group G (G1 vs G3) at Soccer City Johannesburg

Radisson Blu (B)

**June 21: Cape Town - Group G Match (G4 vs G2)** - The day is free to enjoy some of the Experiences in and around Cape Town. Later this evening attend a group G match at Green Point Stadium. Match time is 8:30 PM. As a guest of LAFC you will enjoy VIP Seating in the special FIFA Business Seat. We have VIP security access and parking to ensure minimal inconvenience getting in and out of the game. Special transport will take you to and from the game.

Radisson Blu (B)

**June 22 & 23: Cape Town** - Your next two days are at leisure to explore the Cape via the wide range of Experiences we offer.

Alternatively, you can take in additional Matches on these days as follows;

June 22: Group A (A2 vs A3) at Rustenburg OR Group A (A4 vs A1) at Bloemfontein OR Group B (B4 vs B1) at Polokwane OR Group B (B2 vs B3) at Durban

June 23: Group D (D2 vs D3) at Nelspruit OR Group C (C4 vs C1) at Port Elizabeth OR Group D (D4 vs D1) at Soccer City Johannesburg

Radisson Blu (B)

**June 24: Cape Town - Group E Match (E4 vs E1)** - The day is free to enjoy some of the Experiences in and around Cape Town. Later this evening attend a group E match at Green Point Stadium in Cape Town. Match time today is 8:30 PM. As a guest of LAFC you will enjoy VIP Seating in the special FIFA Business Seat. We have VIP security access and parking to ensure minimal inconvenience getting in and out of the game. Special transport will take you to and from the game.

Radisson Blu (B)

**June 25: Departure** - Transfer to Cape Town Airport for onward flights back to your home city. (B)

## World Cup 2010, South Africa - Departure W3

June 12, 2010 – June 26, 2010

**\$21,189**

**CALL TODAY:**

**Linda Terrill, Travel Advisor**

Luxury Hotel Specialist & Accredited Virtuoso Consultant  
Independent Associate, Sterling Brownell Travel, A Virtuoso Agency

**800-863-9067**

### Trip Highlights

- Five Star Hotels in South Africa
- A 5 night premier wildlife safari experience in Zambia's Luangwa National Park and Mosi-oa-Tunya National Park together with a night at the incredible Victoria Falls
- Invitations to attend 3 guaranteed group matches in the VIP FIFA Business Seat section as a guest of LAFC.
- Select from a range of the finest South African touring Experiences on a day-by-day basis before you depart or even while you are in country.
- Dedicated on-site team at your disposal to look after you on an individual basis while in South Africa

### Full Description

You are invited to attend the World Cup 2010 in South Africa!

For the first time ever, the continent of Africa is hosting the world's most prestigious global sporting event - the World Cup. South Africa, with its breathtaking natural beauty, vibrant modern cities and a wildly enthusiastic young nation eager to show you the time of your life, welcomes you to this singular event where the world's best football (soccer) teams will battle it out under the magnificent African skies for the ultimate football accolade: "2010 World Champions".

This unique trip includes all the elements that make this simply the very best way to experience this phenomenal event; The finest hotels, the very best five night safari experience, including Victoria Falls and VIP seating at the matches as the special guests of LAFC, the home grown Foundation in Pasadena, CA. LAFC is doing inspiring things in Southern Africa and back here in the US to bring sporting opportunities to young people. Our team here in the US will ensure that the planning of your trip will be easy and trouble free and our team on the ground in South Africa will cater to your every need and ensure a World Cup African experience to exceed your wildest expectations!

### Included:

- All accommodation on a two person sharing basis as per the itinerary
- Four night Safari with Wilderness Safaris at Kalamu Lagoon Camp and Puku Ridge Camp including all air transfers - includes all meals, drinks and laundry.
- One night at Victoria Falls – Toka Leya Camp
- Invitations to the matches as indicated on the itinerary in VIP FIFA Business Seats as guests of LAFC
- All transport services and guide services as indicated in the itinerary
- All internal air transportation in South Africa including match day flights where matches are being played in a city other than the one where we have accommodation that day
- All Meals as per the itinerary indicated as B, L, D
- Services of On-Site team in South Africa to handle any requests or issues while in country

### Not Included:

- International Air fares from your home city and return
- Gratuities
- Meals not indicated as (B,L,D) in the itinerary
- Hotel incidentals such as telephone, in room dining, mini bar and laundry
- Optional Match tickets for matches other than those indicated in the itinerary

## Day by Day Itinerary

**June 12: Johannesburg** - Arrive Johannesburg. Our on-site team will meet you and transfer you to your hotel.

For early arrivals the day is free for relaxation at your lovely hotel or to enjoy one of the many Experiences on offer in and around Johannesburg

Alternatively, you can attend one of the following optional matches:

Group C (C1 vs C2) at Rustenburg

OR Group B (B3 vs B4) at Port Elizabeth

Fairlawns

**June 13: Pretoria - Group D Match (D3 vs D4)** - The day is free to enjoy some of the Experiences in and around Johannesburg. This evening attend the Group D Match at Loftus Versfeld Stadium. Match time is 8:30 PM. As a guest of LAFC you will enjoy VIP Seating in the special FIFA Business Seat. We have VIP security access and parking to ensure minimal inconvenience getting in and out of the game. Special transport will take you to and from the game.

Fairlawns (B)

**June 14 & 15: Johannesburg** - You are at leisure to explore Johannesburg area via the wide range of Experiences we offer

Alternatively, you can take in optional Matches on these days as follows;

June 14: Group E (E3 vs E4) at Bloemfontein OR group E (E1 vs E2) at Soccer City Johannesburg

June 15: Group F (F3 vs F4) at Rustenburg OR Group G (G3 vs G4) at Port Elizabeth

Fairlawns (B)

**June 16: Toka Leya, Livingstone** - Transfer early this morning to Johannesburg airport for a flight to Livingstone. You will be met by on-site team who will transfer you to Toka Leya Camp.

Toka Leya Camp is situated on the banks of the Zambezi River in the western sector of the Mosi-Oa-Tunya National Park, some 12km up from the Victoria Falls, one of the Seven Natural Wonders of the World.

Accommodation consists of 12 safari-style tents, each en-suite with a view of the magnificent Zambezi River. The camp's dining and bar area are under a canopy of trees overlooking the River and there is swimming pool.

Activities include a tour of the Falls on the Zambian side, game drives, river cruises, guided walks and fishing. Other activities on offer in the area at an additional charge include sunset cruises, helicopter flights, micro-lighting, canoeing, jet boating, white water rafting and fishing amongst others.

At 1708 metres wide, Victoria Falls is the most expansive curtain of water in the world and drops more than 100 metres into the sheer Zambezi Gorge. The Tonga and Makalolo peoples lived here for centuries before the Falls were 'discovered' by David Livingstone in 1855, who named them after his queen. Its local name - after which the national park is named - is Mosi-Oa-Tunya, "the Smoke that Thunders," which describes accurately the huge spirals of spray that can be seen 30km away.

Located in the south-west corner of Zambia, the Victoria Falls and the Zambezi River are the central points in an area of spectacular scenic beauty: from the Falls themselves to the broad, picturesque course of the Zambezi River upstream, the rainforest adjacent and the stark jagged gorge downstream, the power and timelessness of nature's forces are evident throughout.

Toka Leya Camp (B, L, D)

**June 17 - 20: Puku Ridge Tented Camp/Kalamu Lagoon Camp, Zambia** - After a leisurely breakfast we transfer to Livingstone Airport where we board a private charter for a scenic flight to Mfuwe and the Luangwa National Park.

At Mfuwe the group of 16 guests will split into two smaller groups of 8 passengers each. Group 1 will depart by road transfer to Puku Ridge Tented Camp and Group 2 will depart by air transfer to Kalamu Lagoon Camp. After two nights the groups will exchange Camps for an additional two night stay.

Puku Ridge Tented Camp is a real wilderness experience under canvas with attention to luxury and comfort and emphasis on exciting wildlife opportunities. This superb 12 bed tented safari camp is located in a remote wildlife area in South Luangwa National Park will, on a ridge overlooking spectacular game rich floodplains. For millennia, this low, rocky ridge has overlooked the wide, water-rich valley. From this vantage point among the trees, predators and hunters would quietly observe the prolific hunting grounds spread out below. Visitors come to Puku Ridge to revel in the abundance of wildlife. Game to be seen includes elephant, lion, leopard, wild dog, buffalo and giraffe. The diverse wildlife along the dambo offers great opportunities for photography, whether you choose to explore on foot with a keen-eyed guide, or range further afield in a safari vehicle. Guided walks, game drives and night drives are conducted by armed professional safari guides. In the evenings, you dine with the night sounds of Africa for a soundtrack.

Puku Ridge inhabits a remote world of its own, watching the ancient patterns of life and survival while treating its visitors to enjoyably civilised hospitality. The camp is small and intimate, built unobtrusively close to the wild. It is a twelve-bed tented safari camp with six spacious walk-in canvas safari tents with a wrap around view of the flood plains below. Well-lit pathways cleared of undergrowth will connect the tents to the main bar/lounge. The natural vegetation has been left as undisturbed as possible.

Kalamu Lagoon Camp is situated in the Luamfwa Concession in the southern sector of the South Luangwa National Park. The area covers about 9 050 sq km of the Luangwa Valley floor, which varies from about 500m to 800m above sea level. Near the banks of the Luangwa the land is fairly flat, and mostly covered with mature woodlands. There are few dense shrubberies but also open areas where beautiful tall trees stand, shading a mixture of small bushes and grassland.

South Luangwa is a nature-lover's paradise that offers both unique bird watching and exciting game viewing. A secretive leopard might be spotted in the dense undergrowth or a herd of buffalo seen drinking at an old oxbow lake framed by giant sausage trees. Puku, impala and waterbuck are the most conspicuous mammals while bushbuck and Sharpe's grysbok are regularly seen in the denser vegetation. Lion, spotted hyaena and crocodiles head up the food chain here and a plethora of hippo congregate in the Luangwa River. The Luangwa's often-tuskless elephant can be seen foraging for illala palm fruit or wading through the river and night drives here offer not only the chance of that elusive leopard but also creatures like genet, civet, elephant shrews and white-tailed mongooses. Thornicroft's giraffe is endemic to the Valley and yellow baboons are regularly seen around the camp.

Accommodation consists of 8 safari-style reed and canvas tents, each en-suite with both an indoor and outdoor shower. The camp's dining and bar area are under a canopy of giant ebony trees overlooking a beautiful permanent lagoon just off the (South) Luangwa River. A pool and viewing deck area located to the side of the camp offer spectacular views of the lagoon. South Luangwa is renowned as the best walking destination in Africa and guests have the choice to explore the Luangwa riverine vegetation and adjacent dambos on guided walks. Other activities include day and night game drives.

Puku Ridge and Kalamu Lagoon Camp (B, L, D)

**June 21: Livingstone/Johannesburg - Group H Match (H1 vs H3)** - Fly to Livingstone where you will connect to your flight to Johannesburg with transportation onward to Ellis Park Stadium for the Group H match. Match time today is 8:30 PM. As a guest of LAFC you will enjoy VIP Seating in the special FIFA Business Seat. We have VIP security access and parking to ensure minimal inconvenience getting in and out of the game. After the game, we'll fly you to Cape Town.

Ellerman House (B)

**June 22: Cape Town** - Today is at leisure to choose from a host of activities.

Alternatively, you can take in additional Matches;

Group A (A2 vs A3) at Rustenburg OR Group A (A4 vs A1) at Bloemfontein OR Group B (B4 vs B1) at Polokwane OR Group B (B2 vs B3) at Durban

Ellerman House (B)

**June 23: Pretoria - Group C Match (C2 vs C3)** - Early this afternoon fly to Johannesburg with transportation onward to Pretoria for the Group C match at Loftus Versfeld Stadium. Match time today is 4:00 PM. As a guest of LAFC you will enjoy VIP Seating in the special FIFA Business Seat. We have VIP security access and parking to ensure minimal inconvenience getting in and out of the game. After the game take an early evening flight back to Cape Town and transfer back to the hotel.

Ellerman House (B)

**June 24 & 25: Cape Town** - Your next two days are at leisure to explore the Cape via the wide range of Experiences we offer .

Alternatively, you can take in additional Matches on these days as follows;

June 24: Group E (E2 vs E3) at Rustenburg OR Group F (F2 vs F3) at Polokwane

June 25: Group G (G2 vs G3) at Nelspruit OR Group H (H2 vs H3) at Bloemfontein OR Group G (G4 vs G1) at Durban

Ellerman House (B)

**June 26: Departure** - Transfer to Cape Town Airport for onward flights back to your home city. (B)

## World Cup 2010, South Africa - Departure W4

June 11, 2010 – June 25, 2010

**\$18,089**

**CALL TODAY:**

**Linda Terrill, Travel Advisor**

Luxury Hotel Specialist & Accredited Virtuoso Consultant  
Independent Associate, Sterling Brownell Travel, A Virtuoso Agency

**800-863-9067**

### Trip Highlights

- Five Star Hotels in South Africa
- A 5 night premier wildlife safari experience in Zambia's Luangwa National Park and Mosi-oa-Tunya National Park together with a night at the incredible Victoria Falls
- Invitations to attend 3 guaranteed group matches in the VIP FIFA Business Seat section as a guest of LAFC.
- Select from a range of the finest South African touring Experiences on a day-by-day basis before you depart or even while you are in country.
- Dedicated on-site team at your disposal to look after you on an individual basis while in South Africa

### Full Description

You are invited to attend the World Cup 2010 in South Africa!

For the first time ever, the continent of Africa is hosting the world's most prestigious global sporting event - the World Cup. South Africa, with its breathtaking natural beauty, vibrant modern cities and a wildly enthusiastic young nation eager to show you the time or your life, welcomes you to this singular event where the world's best football (soccer) teams will battle it out under the magnificent African skies for the ultimate football accolade: "2010 World Champions".

This unique trip includes all the elements that make this simply the very best way to experience this phenomenal event; The finest hotels, the very best five night safari experience, including Victoria Falls and VIP seating at the matches as the special guests of LAFC, the home grown Foundation in Pasadena, CA. LAFC is doing inspiring things in Southern Africa and back here in the US to bring sporting opportunities to young people. Our team here in the US will ensure that the planning of your trip will be easy and trouble free and our team on the ground in South Africa will cater to your every need and ensure a World Cup African experience to exceed your wildest expectations!

### Included:

- All accommodation on a two person sharing basis as per the itinerary
- Four night Safari with Wilderness Safaris at Kalamu Lagoon Camp and Puku Ridge Camp including all air transfers - includes all meals, drinks and laundry.
- One night at Victoria Falls – Toka Leya Camp
- Invitations to the matches as indicated on the itinerary in VIP FIFA Business Seats as guests of LAFC
- All transport services and guide services as indicated in the itinerary
- All internal air transportation in South Africa including match day flights where matches are being played in a city other than the one where we have accommodation that day
- All Meals as per the itinerary indicated as B, L, D
- Services of On-Site team in South Africa to handle any requests or issues while in country

### Not Included:

- International Air fares from your home city and return
- Gratuities
- Meals not indicated as (B,L,D) in the itinerary
- Hotel incidentals such as telephone, in room dining, mini bar and laundry
- Optional Match tickets for matches other than those indicated in the itinerary

## Day by Day Itinerary

**June 11: Cape Town** - Arrive Cape Town. Our on-site team will meet you and transfer you to your hotel.

Radisson Blu

**June 12: Cape Town / Johannesburg - Group B Match (B1 vs B2)** - Later this morning fly to Johannesburg with transportation onward to Ellis Park Stadium for the Group B soccer match. Match time is 1:30 PM. As a guest of LAFC you will enjoy VIP Seating in the special FIFA Business Seat. We have VIP security access and parking to ensure minimal inconvenience getting in and out of the game. After the game take an early evening flight back to Cape Town and transfer back to the hotel.

Radisson Blu (B)

**June 13 & 14 - Cape Town** - Cape Town is always the highlight of a trip to Southern Africa. With its breathtaking scenery, its fascinating multi-cultural persona, its superb restaurants, winelands, forest, ocean and mountain experiences and its friendly hospitable residents, it is one of the great travel delights of the modern world. It is also a wonderful place to become enthralled with the vibrant history of Southern Africa, a narrative that has more twists and turns and larger than life protagonists than a Tom Clancy novel. And the narrative is still being threaded today - this World Cup event is an unfolding part of this story. Our varied Experiences in the Cape will make sure you get the most out of what Sir Francis Drake described as "the fairest Cape in the whole circumference of the earth".

Alternatively, you can take in additional Matches on these days as follows;

June 13: Group C (C3 vs C4) at Polokwane OR Group D (D1 vs D2) at Durban.

June 14: Group E at Bloemfontein (E3 vs E4) OR Group E (E1 vs E2) at Soccer City, Johannesburg

Radisson Blu (B)

**June 15: Cape Town - Johannesburg - Group G Match (G1 vs G2)** - The morning is free to enjoy some of the Experiences in and around Cape Town. Early this afternoon we'll fly to Johannesburg and travel to Ellis Park Stadium for the Group G match. Match time is 8:30 PM. As a guest of LAFC you will enjoy VIP Seating in the special FIFA Business Seat. We have VIP security access and parking to ensure minimal inconvenience getting in and out of the game. After the game we'll fly you back to Cape Town and transfer back to the hotel for a late arrival.

Radisson Blu (B)

**June 16 & 17 - Cape Town** - You are at leisure to explore the Cape via the wide range of Experiences we offer.

Alternatively, you can take in optional Matches on these days as follows;

June 16: Group H (H3 vs H4) at Nelspruit OR Group H (H1 vs H2) at Durban

June 17: Group B (B4 vs B2) at Bloemfontein OR Group B (B1 vs B3) at Soccer City, Johannesburg or Group A (A4 vs A2) at Polokwane

Radisson Blu (B)

**June 18: Cape Town - Group C Match (C1 vs C3)** - You are at leisure to explore the Cape via the wide range of Experiences we offer.

This evening you will attend the Group C match at Green Point Stadium in Cape Town. Match time is 8:30 PM. As a guest of LAFC you will enjoy VIP Seating in the special FIFA Business Seat. We have VIP security access and parking to ensure minimal inconvenience getting in and out of the game. Special transport will take you to and from the game.

Radisson Blu (B)

**June 19: Cape Town** - You are at leisure to explore the Cape via the wide range of Experiences we offer.

Alternatively, you can take in optional Matches;

Group D (D4 vs D2) at Rustenburg

OR a Group E (E1 vs E3) at Durban

Radisson Blu (B)

**June 20: Toka Leya, Livingstone** - Early this morning fly to Johannesburg and then to Livingstone. You will be met by on-site team who will transfer you to Toka Leya Camp.

Toka Leya Camp is situated on the banks of the Zambezi River in the western sector of the Mosi-Oa-Tunya National Park, some 12km up from the Victoria Falls, one of the Seven Natural Wonders of the World.

Accommodation consists of 12 safari-style tents, each en-suite with a view of the magnificent Zambezi River. The camp's dining and bar area are

under a canopy of trees overlooking the River and there is swimming pool.

Activities include a tour of the Falls on the Zambian side, game drives, river cruises, guided walks and fishing. Other activities on offer in the area at an additional charge include sunset cruises, helicopter flights, micro-lighting, canoeing, jet boating, white water rafting and fishing amongst others.

At 1708 metres wide, Victoria Falls is the most expansive curtain of water in the world and drops more than 100 metres into the sheer Zambezi Gorge. The Tonga and Makalolo peoples lived here for centuries before the Falls were 'discovered' by David Livingstone in 1855, who named them after his queen. Its local name - after which the national park is named - is Mosi-Oa-Tunya, "the Smoke that Thunders," which describes accurately the huge spirals of spray that can be seen 30km away.

Located in the south-west corner of Zambia, the Victoria Falls and the Zambezi River are the central points in an area of spectacular scenic beauty: from the Falls themselves to the broad, picturesque course of the Zambezi River upstream, the rainforest adjacent and the stark jagged gorge downstream, the power and timelessness of nature's forces are evident throughout.

Toka Leya Camp (B, L, D)

**June 21 - 24: Puku Ridge Tented Camp/Kalamu Lagoon Camp, Zambia** - After a leisurely breakfast we transfer to Livingstone Airport where we board a private charter for a scenic flight to Mfuwe and the Luangwa National Park.

At Mfuwe the group of 16 guests will split into two smaller groups of 8 passengers each. Group 1 will depart by road transfer to Puku Ridge Tented Camp and Group 2 will depart by air transfer to Kalamu Lagoon Camp. After two nights the groups will exchange Camps for an additional two night stay.

Puku Ridge Tented Camp is a real wilderness experience under canvas with attention to luxury and comfort and emphasis on exciting wildlife opportunities. This superb 12 bed tented safari camp is located in a remote wildlife area in South Luangwa National Park will, on a ridge overlooking spectacular game rich floodplains. For millennia, this low, rocky ridge has overlooked the wide, water-rich valley. From this vantage point among the trees, predators and hunters would quietly observe the prolific hunting grounds spread out below. Visitors come to Puku Ridge to revel in the abundance of wildlife. Game to be seen includes elephant, lion, leopard, wild dog, buffalo and giraffe. The diverse wildlife along the dambo offers great opportunities for photography, whether you choose to explore on foot with a keen-eyed guide, or range further afield in a safari vehicle. Guided walks, game drives and night drives are conducted by armed professional safari guides. In the evenings, you dine with the night sounds of Africa for a soundtrack.

Puku Ridge inhabits a remote world of its own, watching the ancient patterns of life and survival while treating its visitors to enjoyably civilised hospitality. The camp is small and intimate, built unobtrusively close to the wild. It is a twelve-bed tented safari camp with six spacious walk-in canvas safari tents with a wrap around view of the flood plains below. Well-lit pathways cleared of undergrowth will connect the tents to the main bar/lounge. The natural vegetation has been left as undisturbed as possible.

Kalamu Lagoon Camp is situated in the Luamfwa Concession in the southern sector of the South Luangwa National Park. The area covers about 9 050 sq km of the Luangwa Valley floor, which varies from about 500m to 800m above sea level. Near the banks of the Luangwa the land is fairly flat, and mostly covered with mature woodlands. There are few dense shrubberies but also open areas where beautiful tall trees stand, shading a mixture of small bushes and grassland.

South Luangwa is a nature-lover's paradise that offers both unique bird watching and exciting game viewing. A secretive leopard might be spotted in the dense undergrowth or a herd of buffalo seen drinking at an old oxbow lake framed by giant sausage trees. Puku, impala and waterbuck are the most conspicuous mammals while bushbuck and Sharpe's grysbok are regularly seen in the denser vegetation. Lion, spotted hyaena and crocodiles head up the food chain here and a plethora of hippo congregate in the Luangwa River. The Luangwa's often-tuskless elephant can be seen foraging for illala palm fruit or wading through the river and night drives here offer not only the chance of that elusive leopard but also creatures like genet, civet, elephant shrews and white-tailed mongooses. Thornicroft's giraffe is endemic to the Valley and yellow baboons are regularly seen around the camp.

Accommodation consists of 8 safari-style reed and canvas tents, each en-suite with both an indoor and outdoor shower. The camp's dining and bar area are under a canopy of giant ebony trees overlooking a beautiful permanent lagoon just off the (South) Luangwa River. A pool and viewing deck area located to the side of the camp offer spectacular views of the lagoon. South Luangwa is renowned as the best walking destination in Africa and guests have the choice to explore the Luangwa riverine vegetation and adjacent dambos on guided walks. Other activities include day and night game drives.

Puku Ridge and Kalamu Lagoon Camp (B, L, D)

**June 25: Departure** - After breakfast you will fly to Livingstone to connect with your onward flights back to your home city. (B)

## World Cup 2010, South Africa - Departure W5

June 23, 2010 – July 6, 2010

\$21,569

**CALL TODAY:**

**Linda Terrill, Travel Advisor**

Luxury Hotel Specialist & Accredited Virtuoso Consultant  
Independent Associate, Sterling Brownell Travel, A Virtuoso Agency

**800-863-9067**

### Trip Highlights

- Five Star Hotels in South Africa
- A 5 night premier wildlife safari experience in Botswana's Okavango Delta together with a night at the incredible Victoria Falls
- Invitations to attend 3 guaranteed late round matches including two Quarter Final matches in the VIP FIFA Business Seat section as a guest of LAFC with Hospitality Party before and after each match
- Select from a range of the finest South African touring Experiences on a day-by-day basis before you depart or even while you are in country
- Dedicated on-site team at your disposal to look after you on an individual basis while in South Africa

### Full Description

You are invited to attend the World Cup 2010 in South Africa!

For the first time ever, the continent of Africa is hosting the world's most prestigious global sporting event - the World Cup. South Africa, with its breathtaking natural beauty, vibrant modern cities and a wildly enthusiastic young nation eager to show you the time or your life, welcomes you to this singular event where the world's best football (soccer) teams will battle it out under the magnificent African skies for the ultimate football accolade: "2010 World Champions".

This unique trip includes all the elements that make this simply the very best way to experience this phenomenal event; The finest hotels, the very best five night safari experience, including Victoria Falls and VIP seating at the matches together with a two hour Hospitality party before and after each match as the special guests of LAFC, the home grown Foundation in Pasadena, CA. LAFC is doing inspiring things in Southern Africa and back here in the US to bring sporting opportunities to young people. Our team here in the US will ensure that the planning of your trip will be easy and trouble free and our team on the ground in South Africa will cater to your every need and ensure a World Cup African experience to exceed your wildest expectations!

### Included:

- All accommodation on a two person sharing basis as per the itinerary
- Four night Safari with Wilderness Safaris at Duma Tau and Vumbura Plains Camps including all air transfers - includes all meals, drinks and laundry.
- One night at Victoria Falls – Toka Leya Camp
- Invitations to the matches as indicated on the itinerary in VIP FIFA Business Seats as guests of LAFC with Hospitality Party for two hours before and after each match
- All transport services and guide services as indicated in the itinerary
- All internal air transportation in South Africa including match day flights where matches are being played in a city other than the one where we have accommodation that day
- All Meals as per the itinerary indicated as B, L, D
- Services of On-Site team in South Africa to handle any requests or issues while in country

### Not Included:

- International Air fares from your home city and return
- Gratuities
- Meals not indicated as (B,L,D) in the itinerary
- Hotel incidentals such as telephone, in room dining, mini bar and laundry
- Optional Match tickets for matches other than those indicated in the itinerary
  
- Visa fees and departure Taxes for Zambia and Botswana

## Day by Day Itinerary

**June 23: Johannesburg** - Arrive Johannesburg. Our on-site team will meet you and transfer you to your hotel. Early arrivals can enjoy one of the many Experiences in and around Johannesburg or spend the day relaxing at this lovely hotel.

Fairlawns

**June 24: Johannesburg - Group F Match (F4 vs F1)** - The morning is free to enjoy some of the Experiences in and around Johannesburg. Later this afternoon attend the group F match at Ellis Park Stadium. Match time is 4:00 PM. As a guest of LAFC you will enjoy VIP Seating in the special FIFA Business Seat. We have VIP security access and parking to ensure minimal inconvenience getting in and out of the game. Special transport will take you to and from the game.

Fairlawns (B)

**June 25 & 26: Duma Tau - Linyanti, Botswana** - Transfer early this morning to Johannesburg Airport for a flight to Livingstone, Zambia. You will be met by the on-site team who will assist you to board the small aircraft for a scenic flight to Duma Tau Camp in the Linyanti Wildlife Reserve.

DumaTau Camp is a 10-roomed tented camp located in the private 125 000 hectare Linyanti Wildlife Reserve which borders onto the western boundary of Chobe National Park in northern Botswana.

The camp is built on raised boardwalks under a shady grove of mangosteen trees, overlooking a large hippo-filled lagoon on the Linyanti waterways. The source of the Savuti Channel is close to the camp and game drives along the Savuti are one of the highlights. The rooms are spacious, raised off the ground and under thatch with canvas walls allowing guests to enjoy the night sounds of Africa from the comfort of their beds. The bathroom facilities are en-suite and each room also has an outside shower. The main areas include a dining room, bar, lounge, curio shop, plunge pool and a special guest toilet with a fantastic view.

The region has all the habitat diversity to make it a haven for wildlife. Activities are diverse and allow guests to spend time on the water (if water levels permit this), on land and occasionally on foot. Day and night game drives are conducted in open 4x4 vehicles along the Savuti Channel and the banks of Linyanti River. There are many hides in the area where guests can enjoy wildlife viewing up close and away from a vehicle. One of the best hides is right at the source of the Savuti and many species of wildlife and birdlife can usually be enjoyed from this hide. The area is famous for its elephant concentrations in the winter months and for the great general game viewing all year. Huge herds of elephant congregate in winter along the waterways and lagoons and at waterholes that are located along the Savuti channel. All the predators such as lion, leopard, cheetah, hyena and wild dog feast on the prey species in the area including impala, zebra, giraffe, wildebeest, lechwe and tsessebe.

DumaTau Camp (B, L, D)

**June 27 & 28: Vumbura Plains, Okavango Delta, Botswana** - After a morning game activity and breakfast fly to Vumbura Plains Camp.

Vumbura Plains is a luxury tented camp situated to the north of Mombo, in a private concession bordering the Moremi Game Reserve in the extreme north of the Okavango Delta. The Vumbura Reserve offers both land and water activities in a park that has a wonderful variety of habitats and a great diversity of wildlife.

The reserve offers an enormous traversing area of close on 130,000 acres. The main activity at Vumbura Plains is game viewing in diverse and scenic countryside. Open 4x4 Land Rovers and walks enable game viewing in the savannah and woodland areas. The Vumbura area is possibly the only area in the Okavango where one can see Red Lechwe (an animal that inhabits the fringes of the waterways) and a Sable antelope (an animal that enjoys the dry countryside) on the same game drive. Add in Lion, Leopard, Elephant, cheetah and Buffalo along with all the plains animals and one has an excellent all round wildlife experience in a remote and private part of the Okavango. Birding too is great with large varieties and quantities. Walks, mokoros and boating give Vumbura Plains' guests the opportunity to enjoy Africa from a different perspective.

Vumbura Plains comprises of 2 x 14 bedded camps linked by raised boardwalks and each has its own dining, lounge and bar area although all 28 beds or parts thereof can be utilised for larger parties. All 14 of the luxury tented rooms are raised off the ground on wooden platforms with walkways connecting them to the main living areas.

Each tented room has a large, very comfortable bedroom, a lounge, a "sala" and en-suite facilities with a shower, bath, a flush toilet and an outdoor shower under the stars. Each room also has its own plunge pool. The main dining, lounge and pub area are also raised off the ground and are tucked beneath a canopy of cool, shady, indigenous trees with a wonderful vista across the floodplains. Access into this area is only by aircraft and then by vehicle to camp.

Vumbura Plains (B, L, D)

**June 29: Toka Leya, Livingstone** - After a morning game activity and breakfast, fly to Livingstone where you will be met by our on-site team and transferred to Toka Leya Camp.

Toka Leya Camp is situated on the banks of the Zambezi River in the western sector of the Mosi-Oa-Tunya National Park, some 12km up from the Victoria Falls, one of the Seven Natural Wonders of the World.

Accommodation consists of 12 safari-style tents, each en-suite with a view of the magnificent Zambezi River. The camp's dining and bar area are under a canopy of trees overlooking the River and there is swimming pool.

Activities include a tour of the Falls on the Zambian side, game drives, river cruises, guided walks and fishing. Other activities on offer in the area at an additional charge include sunset cruises, helicopter flights, micro-lighting, canoeing, jet boating, white water rafting and fishing amongst others.

At 1708 metres wide, Victoria Falls is the most expansive curtain of water in the world and drops more than 100 metres into the sheer Zambezi Gorge. The Tonga and Makalolo peoples lived here for centuries before the Falls were 'discovered' by David Livingstone in 1855, who named them after his queen. Its local name - after which the national park is named - is Mosi-Oa-Tunya, "the Smoke that Thunders," which describes accurately the huge spirals of spray that can be seen 30km away.

Located in the south-west corner of Zambia, the Victoria Falls and the Zambezi River are the central points in an area of spectacular scenic beauty: from the Falls themselves to the broad, picturesque course of the Zambezi River upstream, the rainforest adjacent and the stark jagged gorge downstream, the power and timelessness of nature's forces are evident throughout.

Toka Leya Camp (B, L, D)

**June 30: Cape Town** - After a leisurely breakfast depart Livingstone, with onward connections to Johannesburg and Cape Town. Our on-site team will meet you and transfer you to your hotel.

Cape Town is always the highlight of a trip to Southern Africa. With its breathtaking scenery, its fascinating multi-cultural persona, its superb restaurants, winelands, forest, ocean and mountain experiences and its friendly hospitable residents, it is one of the great travel delights of the modern world. It is also a wonderful place to become enthralled with the vibrant history of Southern Africa, a narrative that has more twists and turns and larger than life protagonists than a Tom Clancy novel. And the narrative is still being threaded today - this World Cup event is an unfolding part of this story. Our varied Experiences in the Cape will make sure you get the most out of what Sir Francis Drake described as "the fairest Cape in the whole circumference of the earth".

Tintswalo Atlantic (B)

**July 1: Cape Town** - At leisure to enjoy some of the Experiences in and around Cape Town .

Tintswalo Atlantic (B)

**July 2: Cape Town - Johannesburg - Quarter Finals Match** - The morning is free to enjoy some of the Experiences in and around Cape Town. Early this afternoon fly to Johannesburg with transportation onward to Soccer City for the Quarter Final Match. Match time is 8:30 PM. As a guest of LAFC you will enjoy VIP Seating in the special FIFA Business Seat and a two hour Hospitality event before and after the game. We have VIP security access and parking to ensure minimal inconvenience getting in and out of the game. After the game and Hospitality party we'll fly you back to Cape Town for a late arrival at the hotel.

Tintswalo Atlantic (B, D)

**July 3: Cape Town - Quarter Finals Match** - This morning, relax around the Hotel or in the village of Hout Bay.

Early this afternoon attend the Quarter Final World Cup match at Green Point Stadium. Match time is 4:00 PM. As a guest of LAFC you will enjoy VIP Seating in the special FIFA Business Seat and a two hour Hospitality event before and after the game. We have VIP security access and parking to ensure minimal inconvenience getting in and out of the game. Special transport will take you to and from the game.

Tintswalo Atlantic (B, L, D)

**July 4 & 5: Cape Town** - At leisure to enjoy some of the Experiences in and around Cape Town .

Tintswalo Atlantic (B)

**July 6: Departure** - Transfer to Cape Town Airport for onward flights back to your home city. (B)

## World Cup 2010, South Africa - Departure W6

June 26, 2010 – July 12, 2010

**\$30,459**

**CALL TODAY:**

**Linda Terrill, Travel Advisor**

Luxury Hotel Specialist & Accredited Virtuoso Consultant  
Independent Associate, Sterling Brownell Travel, A Virtuoso Agency

**800-863-9067**

### Trip Highlights

- Five Star Hotels in South Africa
- A 5 night premier wildlife safari experience in Botswana's Okavango Delta together with a night at the incredible Victoria Falls
- Invitations to attend 3 guaranteed late round matches including one Round of 16 match, one Semi Final and the Final in the VIP FIFA Business Seat section as a guest of LAFC with Hospitality Party before and after each match
- Select from a range of the finest South African touring Experiences on a day-by-day basis before you depart or even while you are in country
- Dedicated on-site team at your disposal to look after you on an individual basis while in South Africa

### Full Description

You are invited to attend the World Cup 2010 in South Africa!

For the first time ever, the continent of Africa is hosting the world's most prestigious global sporting event - the World Cup. South Africa, with its breathtaking natural beauty, vibrant modern cities and a wildly enthusiastic young nation eager to show you the time or your life, welcomes you to this singular event where the world's best football (soccer) teams will battle it out under the magnificent African skies for the ultimate football accolade: "2010 World Champions".

This unique trip includes all the elements that make this simply the very best way to experience this phenomenal event; The finest hotels, the very best five night safari experience, including Victoria Falls and VIP seating at the matches together with a two hour Hospitality party before and after each match as the special guests of LAFC, the home grown Foundation in Pasadena, CA. LAFC is doing inspiring things in Southern Africa and back here in the US to bring sporting opportunities to young people. Our team here in the US will ensure that the planning of your trip will be easy and trouble free and our team on the ground in South Africa will cater to your every need and ensure a World Cup African experience to exceed your wildest expectations!

### Included:

- All accommodation on a two person sharing basis as per the itinerary
- Four night Safari with Wilderness Safaris at Duma Tau and Vumbura Plains Camps including all air transfers - includes all meals, drinks and laundry.
- One night at Victoria Falls – Toka Leya Camp
- Invitations to the matches as indicated on the itinerary in VIP FIFA Business Seats as guests of LAFC with Hospitality Party for two hours before and after each match
- All transport services and guide services as indicated in the itinerary
- All internal air transportation in South Africa including match day flights where matches are being played in a city other than the one where we have accommodation that day
- All Meals as per the itinerary indicated as B, L, D
- Services of On-Site team in South Africa to handle any requests or issues while in country

### Not Included:

- International Air fares from your home city and return
- Gratuities
- Meals not indicated as (B,L,D) in the itinerary
- Hotel incidentals such as telephone, in room dining, mini bar and laundry
- Optional Match tickets for matches other than those indicated in the itinerary
  
- Visa fees and departure Taxes for Zambia and Botswana

## Day by Day Itinerary

**June 26: Johannesburg** - Arrive Johannesburg. Our on-site team will meet you and transfer you to your hotel.

For early arrivals the day is free for relaxation at your lovely hotel or to enjoy one of the many Experiences on offer in and around Johannesburg.

Fairlawns

**June 27: Johannesburg - Round of 16 Match** - This morning you are at leisure to explore areas in and around Johannesburg.

Later this afternoon attend the Round of 16 match at Soccer City in Johannesburg. Match time is 8:30 PM. As a guest of LAFC you will enjoy VIP Seating in the special FIFA Business Seat and a two hour Hospitality event before and after the game. We have VIP security access and parking to ensure minimal inconvenience getting in and out of the game. Special transport will take you to and from the game.

Fairlawns (B, D)

**June 28: Toka Leya, Livingstone** - Transfer early this morning to Johannesburg airport for a flight to Livingstone. You will be met by the on-site team who will transfer you to Toka Leya Camp.

Toka Leya Camp is situated on the banks of the Zambezi River in the western sector of the Mosi-Oa-Tunya National Park, some 12km up from the Victoria Falls, one of the Seven Natural Wonders of the World.

Accommodation consists of 12 safari-style tents, each en-suite with a view of the magnificent Zambezi River. The camp's dining and bar area are under a canopy of trees overlooking the River and there is swimming pool.

Activities include a tour of the Falls on the Zambian side, game drives, river cruises, guided walks and fishing. Other activities on offer in the area at an additional charge include sunset cruises, helicopter flights, micro-lighting, canoeing, jet boating, white water rafting and fishing amongst others.

At 1708 metres wide, Victoria Falls is the most expansive curtain of water in the world and drops more than 100 metres into the sheer Zambezi Gorge. The Tonga and Makalolo peoples lived here for centuries before the Falls were 'discovered' by David Livingstone in 1855, who named them after his queen. Its local name - after which the national park is named - is Mosi-Oa-Tunya, "the Smoke that Thunders," which describes accurately the huge spirals of spray that can be seen 30km away.

Located in the south-west corner of Zambia, the Victoria Falls and the Zambezi River are the central points in an area of spectacular scenic beauty: from the Falls themselves to the broad, picturesque course of the Zambezi River upstream, the rainforest adjacent and the stark jagged gorge downstream, the power and timelessness of nature's forces are evident throughout.

Toka Leya Camp (B, L, D)

**June 29 & 30: Duma Tau - Linyanti, Botswana** - After a leisurely breakfast we board the small planes for a flight to Duma Tau Camp in the Linyanti Wildlife Reserve.

Duma Tau Camp is a 10-roomed tented camp located in the private 125 000 hectare Linyanti Wildlife Reserve which borders onto the western boundary of Chobe National Park in northern Botswana.

The camp is built on raised boardwalks under a shady grove of mangosteen trees, overlooking a large hippo-filled lagoon on the Linyanti waterways. The source of the Savuti Channel is close to the camp and game drives along the Savuti are one of the highlights. The rooms are spacious, raised off the ground and under thatch with canvas walls allowing guests to enjoy the night sounds of Africa from the comfort of their beds. The bathroom facilities are en-suite and each room also has an outside shower. The main areas include a dining room, bar, lounge, curio shop, plunge pool and a special guest toilet with a fantastic view.

The region has all the habitat diversity to make it a haven for wildlife. Activities are diverse and allow guests to spend time on the water (if water levels permit this), on land and occasionally on foot. Day and night game drives are conducted in open 4x4 vehicles along the Savuti Channel and the banks of Linyanti River. There are many hides in the area where guests can enjoy wildlife viewing up close and away from a vehicle. One of the best hides is right at the source of the Savuti and many species of wildlife and birdlife can usually be enjoyed from this hide. The area is famous for its elephant concentrations in the winter months and for the great general game viewing all year. Huge herds of elephant congregate in winter along the waterways and lagoons and at waterholes that are located along the Savuti channel. All the predators such as lion, leopard, cheetah, hyena and wild dog feast on the prey species in the area including impala, zebra, giraffe, wildebeest, lechwe and tsessebe.

Duma Tau Camp (B, L, D)

**July 1 & 2: Vumbura Plains - Okavango Delta, Botswana** - After a morning game activity and breakfast you fly to Vumbura Plains Camp.

Vumbura Plains is a luxury tented camp situated to the north of Mombo, in a private concession bordering the Moremi Game Reserve in the extreme north of the Okavango Delta. The Vumbura Reserve offers both land and water activities in a park that has a wonderful variety of habitats

and a great diversity of wildlife.

The reserve offers an enormous traversing area of close on 130,000 acres. The main activity at Vumbura Plains is game viewing in diverse and scenic countryside. Open 4x4 Land Rovers and walks enable game viewing in the savannah and woodland areas. The Vumbura area is possibly the only area in the Okavango where one can see Red Lechwe (an animal that inhabits the fringes of the waterways) and a Sable antelope (an animal that enjoys the dry countryside) on the same game drive. Add in Lion, Leopard, Elephant, cheetah and Buffalo along with all the plains animals and one has an excellent all round wildlife experience in a remote and private part of the Okavango. Birding too is great with large varieties and quantities. Walks, mokoros and boating give Vumbura Plains' guests the opportunity to enjoy Africa from a different perspective.

Vumbura Plains comprises of 2 x 14 bedded camps linked by raised boardwalks and each has its own dining, lounge and bar area although all 28 beds or parts thereof can be utilised for larger parties. All 14 of the luxury tented rooms are raised off the ground on wooden platforms with walkways connecting them to the main living areas.

Each tented room has a large, very comfortable bedroom, a lounge, a "sala" and en-suite facilities with a shower, bath, a flush toilet and an outdoor shower under the stars. Each room also has its own plunge pool. The main dining, lounge and pub area are also raised off the ground and are tucked beneath a canopy of cool, shady, indigenous trees with a wonderful vista across the floodplains. Access into this area is only by aircraft and then by vehicle to camp.

Vumbura Plains (B, L, D)

**July 3: Cape Town** - After an early morning game drive and a leisurely breakfast depart Vumbura Plains and fly to Livingstone, with onward connections to Johannesburg and Cape Town. Our on-site team will meet you and transfer you to your hotel.

Tintswalo Atlantic (B)

**July 4 & 5: Cape Town** - Cape Town is always the highlight of a trip to Southern Africa. With its breathtaking scenery, its fascinating multi-cultural persona, its superb restaurants, winelands, forest, ocean and mountain experiences and its friendly hospitable residents, it is one of the great travel delights of the modern world. It is also a wonderful place to become enthralled with the vibrant history of Southern Africa, a narrative that has more twists and turns and larger than life protagonists than a Tom Clancy novel. And the narrative is still being threaded today - this World Cup event is an unfolding part of this story. Our varied Experiences in the Cape will make sure you get the most out of what Sir Francis Drake described as "the fairest Cape in the whole circumference of the earth".

You are at leisure to explore the Cape via the wide range of Experiences we offer.

Tintswalo Atlantic (B)

**July 6: Cape Town - Semi Final Match** - Today you are at leisure to explore the Cape via the wide range of Experiences we offer (see Experiences Tab).

Later this evening attend the Semi Final at Green Point Stadium. Match time is 8:30 PM. As a guest of LAFC you will enjoy VIP Seating in the special FIFA Business Seat and a two hour Hospitality event before and after the game. We have VIP security access and parking to ensure minimal inconvenience getting in and out of the game. Special transport will take you to and from the game.

Tintswalo Atlantic (B, D)

**July 7 through 10: Cape Town** - It's four days to the Finals! Your next four days are at leisure to choose from a host of Experiences.

Tintswalo Atlantic (B)

**July 11: Soccer City - World Cup Final - Cape Town** - Late this morning we'll fly to Johannesburg and do a brief tour of the city including Soweto. The city will be buzzing with anticipation of the huge event taking place this evening. Later in the afternoon we'll head for Soccer City and the ultimate sporting event on the planet - the World Cup Final!

As a guest of LAFC you will enjoy VIP Seating in the special FIFA Business Seat and a two hour Hospitality event before and after the game. We have VIP security access and parking to ensure minimal inconvenience getting in and out of the game. After the game and the Hospitality party we'll fly you back to Cape Town for a late arrival back at the hotel.

Tintswalo Atlantic (B, D)

**July 12 - Departure** - Transfer to Cape Town Airport for onward flights back to your home city. (B)

## World Cup 2010, South Africa - Departure W9

July 4, 2010 – July 17, 2010

**\$31,902**

**CALL TODAY:**

**Linda Terrill, Travel Advisor**

Luxury Hotel Specialist & Accredited Virtuoso Consultant  
Independent Associate, Sterling Brownell Travel, A Virtuoso Agency

**800-863-9067**

### Trip Highlights

- Five Star Hotels in South Africa
- A 5 night premier wildlife safari experience in Botswana's Okavango Delta together with a night at the incredible Victoria Falls
- Invitations to attend 3 guaranteed late round matches including two Semi Final matches and the Final in the VIP FIFA Business Seat section as a guest of LAFC with Hospitality Party before and after each match
- Select from a range of the finest South African touring Experiences on a day-by-day basis before you depart or even while you are in country
- Dedicated on-site team at your disposal to look after you on an individual basis while in South Africa

### Full Description

You are invited to attend the World Cup 2010 in South Africa!

For the first time ever, the continent of Africa is hosting the world's most prestigious global sporting event - the World Cup. South Africa, with its breathtaking natural beauty, vibrant modern cities and a wildly enthusiastic young nation eager to show you the time or your life, welcomes you to this singular event where the world's best football (soccer) teams will battle it out under the magnificent African skies for the ultimate football accolade: "2010 World Champions".

This unique trip includes all the elements that make this simply the very best way to experience this phenomenal event; The finest hotels, the very best five night safari experience, including Victoria Falls and VIP seating at the matches together with a two hour Hospitality party before and after each match as the special guests of LAFC, the home grown Foundation in Pasadena, CA. LAFC is doing inspiring things in Southern Africa and back here in the US to bring sporting opportunities to young people. Our team here in the US will ensure that the planning of your trip will be easy and trouble free and our team on the ground in South Africa will cater to your every need and ensure a World Cup African experience to exceed your wildest expectations!

### Included:

- All accommodation on a two person sharing basis as per the itinerary
- Four night Safari with Wilderness Safaris at Duma Tau and Vumbura Plains Camps including all air transfers - includes all meals, drinks and laundry.
- One night at Victoria Falls – Toka Leya Camp
- Invitations to the matches as indicated on the itinerary in VIP FIFA Business Seats as guests of LAFC with Hospitality Party for two hours before and after each match
- All transport services and guide services as indicated in the itinerary
- All internal air transportation in South Africa including match day flights where matches are being played in a city other than the one where we have accommodation that day
- All Meals as per the itinerary indicated as B, L, D
- Services of On-Site team in South Africa to handle any requests or issues while in country

### Not Included:

- International Air fares from your home city and return
- Gratuities
- Meals not indicated as (B,L,D) in the itinerary
- Hotel incidentals such as telephone, in room dining, mini bar and laundry
- Optional Match tickets for matches other than those indicated in the itinerary
  
- Visa fees and departure Taxes for Zambia and Botswana

## Day by Day Itinerary

**July 4: Cape Town** - Arrive Cape Town. Our on-site team will meet you and transfer you to your hotel.

For early arrivals the day is free for relaxation at your lovely hotel or to enjoy one of the many Experiences on offer in and around Cape Town

Radisson Blu

**July 5: Cape Town** - Cape Town is always the highlight of a trip to Southern Africa. With its breathtaking scenery, its fascinating multi-cultural persona, its superb restaurants, winelands, forest, ocean and mountain experiences and its friendly hospitable residents, it is one of the great travel delights of the modern world. It is also a wonderful place to become enthralled with the vibrant history of Southern Africa, a narrative that has more twists and turns and larger than life protagonists than a Tom Clancy novel. And the narrative is still being threaded today - this World Cup event is an unfolding part of this story. Our varied Experiences in the Cape will make sure you get the most out of what Sir Francis Drake described as "the fairest Cape in the whole circumference of the earth". Check out the Experiences tab at the top of this page to get a sense of all the incredible activities that await.

Radisson Blu (B)

**July 6: Cape Town - Semi Final Match** - This morning you are at leisure to explore the Cape via the wide range of Experiences we offer.

Later this evening attend Semi Final match at Green Point Stadium. Match time is 8:30 PM. As a guest of LAFC you will enjoy VIP Seating in the special FIFA Business Seat and a two hour Hospitality event before and after the game. We have VIP security access and parking to ensure minimal inconvenience getting in and out of the game. One of the most artistic football venues in South Africa, the newly-built Green Point Stadium is situated in one of the much sought-after areas in the city of Cape Town. Special transport will take you to and from the game.

Radisson Blu (B, D)

**July 7: Cape Town - Durban - Semi Final Match** - Early this afternoon fly to Durban with transportation onward to Durban stadium to attend your second Semi Final Match. Match time is 8:30 PM. As a guest of LAFC you will enjoy VIP Seating in the special FIFA Business Seat and a two hour Hospitality event before and after the game. We have VIP security access and parking to ensure minimal inconvenience getting in and out of the game. After the game and Hospitality party we'll fly you back to Cape Town for a late arrival back at the hotel.

Radisson Blu (B, D)

**July 8 through 10:** - You are at leisure to explore the Cape via the wide range of Experiences we offer.

Radisson Blu (B)

**July 11: Soccer City - World Cup Final** - Later this morning we'll fly you to Johannesburg. We'll check into our hotel and depart on a brief tour of the city and Soweto. The city will be buzzing with anticipation of the huge event taking place this evening. Later in the afternoon we'll head for Soccer City and the ultimate sporting event on the planet - the World Cup Final!

As a guest of LAFC you will enjoy VIP Seating in the special FIFA Business Seat and a two hour Hospitality event before and after the game. We have VIP security access and parking to ensure minimal inconvenience getting in and out of the game. Special transport will take you to and from the game.

Fairlawns (B, D)

**July 12: Toka Leya, Livingstone** - Transfer early this morning to Johannesburg airport for a flight to Livingstone. You will be met by our on-site team who will transfer you to Toka Leya Camp.

Toka Leya Camp is situated on the banks of the Zambezi River in the western sector of the Mosi-Oa-Tunya National Park, some 12km up from the Victoria Falls, one of the Seven Natural Wonders of the World.

Accommodation consists of 12 safari-style tents, each en-suite with a view of the magnificent Zambezi River. The camp's dining and bar area are under a canopy of trees overlooking the River and there is swimming pool.

Activities include a tour of the Falls on the Zambian side, game drives, river cruises, guided walks and fishing. Other activities on offer in the area at an additional charge include sunset cruises, helicopter flights, micro-lighting, canoeing, jet boating, white water rafting and fishing amongst others.

At 1708 metres wide, Victoria Falls is the most expansive curtain of water in the world and drops more than 100 metres into the sheer Zambezi Gorge. The Tonga and Makalolo peoples lived here for centuries before the Falls were 'discovered' by David Livingstone in 1855, who named them after his queen. Its local name - after which the national park is named - is Mosi-Oa-Tunya, "the Smoke that Thunders," which describes accurately the huge spirals of spray that can be seen 30km away.

Located in the south-west corner of Zambia, the Victoria Falls and the Zambezi River are the central points in an area of spectacular scenic beauty: from the Falls themselves to the broad, picturesque course of the Zambezi River upstream, the rainforest adjacent and the stark jagged gorge downstream, the power and timelessness of nature's forces are evident throughout.

Toka Leya Camp (B, L, D)

**July 13 & 14: Duma Tau - Linyanti, Botswana** - After a leisurely breakfast we board the small planes for a flight to Duma Tau Camp in the Linyanti Wildlife Reserve.

Duma Tau Camp is a 10-roomed tented camp located in the private 125 000 hectare Linyanti Wildlife Reserve which borders onto the western boundary of Chobe National Park in northern Botswana.

The camp is built on raised boardwalks under a shady grove of mangosteen trees, overlooking a large hippo-filled lagoon on the Linyanti waterways. The source of the Savuti Channel is close to the camp and game drives along the Savuti are one of the highlights. The rooms are spacious, raised off the ground and under thatch with canvas walls allowing guests to enjoy the night sounds of Africa from the comfort of their beds. The bathroom facilities are en-suite and each room also has an outside shower. The main areas include a dining room, bar, lounge, curio shop, plunge pool and a special guest toilet with a fantastic view.

The region has all the habitat diversity to make it a haven for wildlife. Activities are diverse and allow guests to spend time on the water (if water levels permit this), on land and occasionally on foot. Day and night game drives are conducted in open 4x4 vehicles along the Savuti Channel and the banks of Linyanti River. There are many hides in the area where guests can enjoy wildlife viewing up close and away from a vehicle. One of the best hides is right at the source of the Savuti and many species of wildlife and birdlife can usually be enjoyed from this hide. The area is famous for its elephant concentrations in the winter months and for the great general game viewing all year. Huge herds of elephant congregate in winter along the waterways and lagoons and at waterholes that are located along the Savuti channel. All the predators such as lion, leopard, cheetah, hyena and wild dog feast on the prey species in the area including impala, zebra, giraffe, wildebeest, lechwe and tsessebe.

Duma Tau Camp (B, L, D)

**July 15 & 16: Vumbura Plains, Botswana** - After a morning game activity and breakfast fly to Vumbura Plains Camp.

Vumbura Plains is a luxury tented camp situated to the north of Mombo, in a private concession bordering the Moremi Game Reserve in the extreme north of the Okavango Delta. The Vumbura Reserve offers both land and water activities in a park that has a wonderful variety of habitats and a great diversity of wildlife.

The reserve offers an enormous traversing area of close on 130,000 acres. The main activity at Vumbura Plains is game viewing in diverse and scenic countryside. Open 4x4 Land Rovers and walks enable game viewing in the savannah and woodland areas. The Vumbura area is possibly the only area in the Okavango where one can see Red Lechwe (an animal that inhabits the fringes of the waterways) and a Sable antelope (an animal that enjoys the dry countryside) on the same game drive. Add in Lion, Leopard, Elephant, cheetah and Buffalo along with all the plains animals and one has an excellent all round wildlife experience in a remote and private part of the Okavango. Birding too is great with large varieties and quantities. Walks, mokoros and boating give Vumbura Plains' guests the opportunity to enjoy Africa from a different perspective.

Vumbura Plains comprises of 2 x 14 bedded camps linked by raised boardwalks and each has its own dining, lounge and bar area although all 28 beds or parts thereof can be utilised for larger parties. All 14 of the luxury tented rooms are raised off the ground on wooden platforms with walkways connecting them to the main living areas.

Each tented room has a large, very comfortable bedroom, a lounge, a "sala" and en-suite facilities with a shower, bath, a flush toilet and an outdoor shower under the stars. Each room also has its own plunge pool. The main dining, lounge and pub area are also raised off the ground and are tucked beneath a canopy of cool, shady, indigenous trees with a wonderful vista across the floodplains. Access into this area is only by aircraft and then by vehicle to camp.

Vumbura Plains (B, L, D)

**July 17 - Departure** - After an early morning game drive and a leisurely breakfast depart Vumbura and fly to Livingstone, with onward connections to Johannesburg and your home city (B)

## World Cup 2010, South Africa - Departure S11

July 3, 2010 – July 13, 2010

**\$36,499**

**CALL TODAY:**

**Linda Terrill, Travel Advisor**

Luxury Hotel Specialist & Accredited Virtuoso Consultant  
Independent Associate, Sterling Brownell Travel, A Virtuoso Agency

**800-863-9067**

### Trip Highlights

- Finest Hotels in South Africa
- A premier wildlife safari experience in world renowned Singita camps
- Invitations to attend 3 guaranteed late round matches including two Semi Finals matches and the Final in the VIP FIFA Business Seat section as a guest of LAFC with Hospitality Party before and after each match
- Select from a range of the finest South African touring Experiences on a day-by-day basis before you depart or even while you are in country.
- Dedicated on-site team at your disposal to look after you on an individual basis while in South Africa

### Full Description

You are invited to attend the World Cup 2010 in South Africa!

For the first time ever, the continent of Africa is hosting the world's most prestigious global sporting event - the World Cup. South Africa, with its breathtaking natural beauty, vibrant modern cities and a wildly enthusiastic young nation eager to show you the time of your life, welcomes you to this singular event where the world's best football (soccer) teams will battle it out under the magnificent African skies for the ultimate football accolade: "2010 World Champions".

This unique trip includes all the elements that make this simply the very best way to experience this phenomenal event; The finest hotels, the very best three night safari experience with Singita and VIP seating at the matches together with a two hour Hospitality party before and after each match as the special guests of LAFC, the home grown Foundation from Pasadena, CA. LAFC is doing inspiring things in Southern Africa and back here in the US to bring sporting opportunities to young people. Our team here in the US will ensure that the planning of your trip will be easy and trouble free and our team on the ground in South Africa will cater to your every need and ensure a World Cup African experience to exceed your wildest expectations!

### Included:

- All accommodation on a two person sharing basis as per the itinerary
- Three night Safari with Singita including all air transfers - includes all meals, drinks and laundry.
- Invitations to the matches as indicated on the itinerary in VIP FIFA Business Seats as guests of LAFC with Hospitality Party for two hours before and after each match
- All transport services and guide services as indicated in the itinerary
- All internal air transportation in South Africa including match day flights where matches are being played in a city other than the one where we have accommodation that day
- All Meals as per the itinerary indicated as B, L, D
- Services of On-Site team in South Africa to handle any requests or issues while in country

### Not Included:

- International Air fares from your home city and return
- Gratuities
- Meals not indicated as (B, L, D) in the itinerary
- Hotel incidentals such as telephone, in room dining, mini bar and laundry (outside of Singita camps).
- Optional Match tickets for matches other than those indicated in the itinerary

## Day by Day Itinerary

**July 3: Cape Town** - Arrive Cape Town. Our on-site team will meet you and transfer you to your lovely hotel.

Ellerman House

**July 4 & 5: Cape Town** - Cape Town is always the highlight of a trip to Southern Africa. With its breathtaking scenery, its fascinating multi-cultural persona, its superb restaurants, winelands, forest, ocean and mountain experiences and its friendly hospitable residents, it is one of the great travel delights of the modern world. It is also a wonderful place to become enthralled with the vibrant history of Southern Africa, a narrative that has more twists and turns and larger than life protagonists than a Tom Clancy novel. And the narrative is still being threaded today - this World Cup event is an unfolding part of this story. Our varied Experiences in the Cape will make sure you get the most out of what Sir Francis Drake described as "the fairest Cape in the whole circumference of the earth". Check out the Experiences tab at the top of this page to get a sense of all the incredible activities that await.

Ellerman House (B)

**July 6: Cape Town - Semi Finals Match** - This morning you are at leisure to explore the Cape via the wide range of Experiences we offer.

Later this evening we'll depart for the key Semi Final match at Green Point Stadium. Match time is 8:30 PM. As a guest of LAFC you will enjoy VIP Seating in the special FIFA Business Seat and a two hour Hospitality event before and after the game. We have VIP security access and parking to ensure minimal inconvenience getting in and out of the game. One of the most artistic football venues in South Africa, the newly-built Green Point Stadium is situated in one of the much sought-after areas in the city of Cape Town. Special transport will take you to and from the game.

Ellerman House (B, D)

**July 7: Cape Town - Durban - Semi Finals Match** - Early this afternoon fly to with transportation onward to Durban stadium to attend the last Semi Final match. Match time is 8:30 PM. As a guest of LAFC you will enjoy VIP Seating in the special FIFA Business Seat and a two hour Hospitality event before and after the game. We have VIP security access and parking to ensure minimal inconvenience getting in and out of the game. After the game and Hospitality party we'll fly you back to Cape Town for a late arrival back at the hotel.

Ellerman House (B, D)

**July 8 through 10: Singita Wildlife Safari** - Transfer early this morning to Cape Town Airport for a flight to Johannesburg and then a short hop into Singita. Fly to Singita Private Game Reserve, a world-renowned safari destination. Singita Kruger National Park is situated where two rivers meet, in an exclusive game-rich 33 000 acres concession in the world-renowned Kruger National Park. Boasting the highest concentration of wildlife in the entire park, including the 'Big 5', the area is also known for its majestic Mountain Pride of lions and unique Euphorbia trees.

Offering contemporary African chic, Singita Lebombo Lodge is a celebration of light and comfort with intrinsic touches that delight the senses. Structurally inspired by an eagle's nest the 15 loft-style suites perch high above the N'wanetsi River. A spectacular cliffside pool offsets views of the Lebombo Mountain foothills. Nestled low on the Sweni River, the more intimate Singita Sweni Lodge boasts six exclusive suites on the water's edge. Expressing a distinctly avant-garde African style, the lush surroundings blend beautifully with Sweni's charm.

Singita Private Game Reserve (B, L, D)

**July 11: Soccer City - World Cup Final - Cape Town** - Early this afternoon we'll fly to Johannesburg and do a short tour of Johannesburg including Soweto. The city will be buzzing with anticipation of the huge event taking place this evening. In the evening we'll head for Soccer City and the ultimate sporting event on the planet - the World Cup Final!

As a guest of LAFC you will enjoy VIP Seating in the special FIFA Business Seat and a two hour Hospitality event before and after the game. We have VIP security access and parking to ensure minimal inconvenience getting in and out of the game. After the game and hospitality party we'll fly you back to Cape Town for a late arrival at the hotel.

Ellerman House (B, D)

**July 12: Cape Town** - You are at leisure to explore the Cape via the wide range of Experiences we offer.

Ellerman House (B)

**July 13: Departure** - Transfer to Cape Town Airport for onward flights back to your home city. (B)

## World Cup 2010, South Africa - Departure S12

July 5, 2010 – July 15, 2010

**\$35,221**

**CALL TODAY:**

**Linda Terrill, Travel Advisor**

Luxury Hotel Specialist & Accredited Virtuoso Consultant  
Independent Associate, Sterling Brownell Travel, A Virtuoso Agency

**800-863-9067**

### Trip Highlights

- Finest Hotels in South Africa
- A premier wildlife safari experience in world renowned Singita camps
- Invitations to attend 3 guaranteed late round matches including two Semi Finals matches and the Final in the VIP FIFA Business Seat section as a guest of LAFC with Hospitality Party before and after each match
- Select from a range of the finest South African touring Experiences on a day-by-day basis before you depart or even while you are in country.
- Dedicated on-site team at your disposal to look after you on an individual basis while in South Africa

### Full Description

You are invited to attend the World Cup 2010 in South Africa!

For the first time ever, the continent of Africa is hosting the world's most prestigious global sporting event - the World Cup. South Africa, with its breathtaking natural beauty, vibrant modern cities and a wildly enthusiastic young nation eager to show you the time or your life, welcomes you to this singular event where the world's best football (soccer) teams will battle it out under the magnificent African skies for the ultimate football accolade: "2010 World Champions".

This unique trip includes all the elements that make this simply the very best way to experience this phenomenal event; The finest hotels, the very best three night safari experience with Singita and VIP seating at the matches together with a two hour Hospitality party before and after each match as the special guests of LAFC, the home grown Foundation from Pasadena, CA. LAFC is doing inspiring things in Southern Africa and back here in the US to bring sporting opportunities to young people. Our team here in the US will ensure that the planning of your trip will be easy and trouble free and our team on the ground in South Africa will cater to your every need and ensure a World Cup African experience to exceed your wildest expectations!

### Included:

- All accommodation on a two person sharing basis as per the itinerary
- Three night Safari with Singita including all air transfers - includes all meals, drinks and laundry.
- Invitations to the matches as indicated on the itinerary in VIP FIFA Business Seats as guests of LAFC with Hospitality Party for two hours before and after each match
- All transport services and guide services as indicated in the itinerary
- All internal air transportation in South Africa including match day flights where matches are being played in a city other than the one where we have accommodation that day
- All Meals as per the itinerary indicated as B, L, D
- Services of On-Site team in South Africa to handle any requests or issues while in country

### Not Included:

- International Air fares from your home city and return
- Gratuities
- Meals not indicated as (B, L, D) in the itinerary
- Hotel incidentals such as telephone, in room dining, mini bar and laundry (outside of Singita camps).
- Optional Match tickets for matches other than those indicated in the itinerary

## Day by Day Itinerary

**July 5: Cape Town** - Arrive Cape Town. Our on-site team will meet you and transfer you to your lovely hotel.

Ellerman House

**July 6: Cape Town - Semi Finals Match** - Cape Town is always the highlight of a trip to Southern Africa. With its breathtaking scenery, its fascinating multi-cultural persona, its superb restaurants, winelands, forest, ocean and mountain experiences and its friendly hospitable residents, it is one of the great travel delights of the modern world. It is also a wonderful place to become enthralled with the vibrant history of Southern Africa, a narrative that has more twists and turns and larger than life protagonists than a Tom Clancy novel. And the narrative is still being threaded today - this World Cup event is an unfolding part of this story. Our varied Experiences in the Cape will make sure you get the most out of what Sir Francis Drake described as "the fairest Cape in the whole circumference of the earth".

Later this evening attend the Semi Final match at Green Point Stadium. Match time is 8:30 PM. As a guest of LAFC you will enjoy VIP Seating in the special FIFA Business Seat and a two hour Hospitality event before and after the game. We have VIP security access and parking to ensure minimal inconvenience getting in and out of the game. One of the most artistic football venues in South Africa, the newly-built Green Point Stadium is situated in one of the much sought-after areas in the city of Cape Town. Special transport will take you to and from the game.

Ellerman House (B, D)

**July 7: Cape Town - Durban - Semi Finals Match** - The morning is free for relaxation at this exceptional hotel. Early this afternoon fly to Durban to attend the last Semi Final match. Match time is 8:30 PM. As a guest of LAFC you will enjoy VIP Seating in the special FIFA Business Seat and a two hour Hospitality event before and after the game. We have VIP security access and parking to ensure minimal inconvenience getting in and out of the game. After the game and Hospitality party we'll fly you back to Cape Town for a late arrival back at the hotel.

Ellerman House (B, D)

**July 8 through 10: Cape Town** - It's three days to the Finals! Your next three days are at leisure to choose from a host of activities and Experiences on offer.

Ellerman House (B)

**July 11: Soccer City - World Cup Final** - Later this morning we'll fly to Johannesburg check into our hotel. We'll take a fascinating tour of Johannesburg and Soweto. The city will be buzzing with anticipation of the huge event taking place this evening. Later in the afternoon we'll head for Soccer City and the ultimate sporting event on the planet - the World Cup Final! As a guest of LAFC you will enjoy VIP Seating in the special FIFA Business Seat and a two hour Hospitality event before and after the game. We have VIP security access and parking to ensure minimal inconvenience getting in and out of the game. Special transport will take you to and from the game.

D'Oreale Grande Hotel (B, D)

**July 12 through 14: Singita Wildlife Safari** - Transfer early this morning to Cape Town Airport for a flight to Johannesburg and then a short hop into Singita Private Game Reserve, a world-renowned safari destination. Singita Kruger National Park is situated where two rivers meet, in an exclusive game-rich 33 000 acres concession in the world-renowned Kruger National Park. Boasting the highest concentration of wildlife in the entire park, including the 'Big 5', the area is also known for its majestic Mountain Pride of lions and unique Euphorbia trees.

Offering contemporary African chic, Singita Lebombo Lodge is a celebration of light and comfort with intrinsic touches that delight the senses. Structurally inspired by an eagle's nest the 15 loft-style suites perch high above the N'wanetsi River. A spectacular cliffside pool offsets views of the Lebombo Mountain foothills. Nestled low on the Sweni River, the more intimate Singita Sweni Lodge boasts six exclusive suites on the water's edge. Expressing a distinctly avant-garde African style, the lush surroundings blend beautifully with Sweni's charm.

Singita Private Game Reserve (B, L, D)

**July 15: Departure** - After an early morning game drive and a leisurely breakfast depart Singita and fly to Johannesburg to connect with your onward flights back to your home city. (B)

## World Cup 2010, South Africa - Departure T11

July 2, 2010 – July 13, 2010

**\$26,890**

**CALL TODAY:**

**Linda Terrill, Travel Advisor**

Luxury Hotel Specialist & Accredited Virtuoso Consultant  
Independent Associate, Sterling Brownell Travel, A Virtuoso Agency

**800-863-9067**

### Trip Highlights

- Five Star Hotels in South Africa
- A premier wildlife safari experience in Tintswalo - one of the finest lodges in Southern Africa
- Invitations to attend 3 guaranteed late round matches including one Quarter Final match, one Semi Finals match and the Final in the VIP FIFA Business Seat section as a guest of LAFC with Hospitality Party before and after each match
- Select from a range of the finest South African touring Experiences on a day-by-day basis before you depart or even while you are in country.
- Dedicated on-site team at your disposal to look after you on an individual basis while in South Africa

### Full Description

You are invited to attend the World Cup 2010 in South Africa!

For the first time ever, the continent of Africa is hosting the world's most prestigious global sporting event - the World Cup. South Africa, with its breathtaking natural beauty, vibrant modern cities and a wildly enthusiastic young nation eager to show you the time or your life, welcomes you to this singular event where the world's best football (soccer) teams will battle it out under the magnificent African skies for the ultimate football accolade: "2010 World Champions".

This unique trip includes all the elements that make this simply the very best way to experience this phenomenal event; The finest hotels, the very best three night safari experience with Tintswalo and VIP seating at the matches together with a two hour Hospitality party before and after each match as the special guests of LAFC, the home grown Foundation in Pasadena, CA. LAFC is doing inspiring things in Southern Africa and back here in the US to bring sporting opportunities to young people. Our team here in the US will ensure that the planning of your trip will be easy and trouble free and our team on the ground in South Africa will cater to your every need and ensure a World Cup African experience to exceed your wildest expectations!

### Included:

- All accommodation on a two person sharing basis as per the itinerary
- Three night Safari with Tintswalo including all air transfers - includes all meals, drinks and laundry.
- Invitations to the matches as indicated on the itinerary in VIP FIFA Business Seats as guests of LAFC with Hospitality Party for two hours before and after each match
- All transport services and guide services as indicated in the itinerary
- All internal air transportation in South Africa including match day flights where matches are being played in a city other than the one where we have accommodation that day
- All Meals as per the itinerary indicated as B, L, D
- Services of On-Site team in South Africa to handle any requests or issues while in country

### Not Included:

- International Air fares from your home city and return
- Gratuities
- Meals not indicated as (B,L,D) in the itinerary
- Hotel incidentals such as telephone, in room dining, mini bar and laundry (outside of Tintswalo camps).
- Optional Match tickets for matches other than those indicated in the itinerary

## Day by Day Itinerary

**July 2: Cape Town** - Arrive Cape Town. Our on-site team will meet you and transfer you to your hotel.

Mount Nelson Exec. Suites

**July 3: Cape Town - Quarter Finals Match** - The morning is at leisure to relax around your lovely hotel or see a little of the city of Cape Town.

Just after noon we'll depart for Green Point Stadium and the key Quarter Finals match. One of the most artistic football venues in South Africa, the newly-built Green Point Stadium is situated in one of the much sought-after areas in the city of Cape Town. Match time is 4:00 PM. As a guest of LAFC you will enjoy VIP Seating in the special FIFA Business Seat and a two hour Hospitality event before and after the game. We have VIP security access and parking to ensure minimal inconvenience getting in and out of the game. Special transport will take you to and from the game.

Mount Nelson Exec. Suites (B, L, D)

**July 4 & July 5: Cape Town** - Cape Town is always the highlight of a trip to Southern Africa. With its breathtaking scenery, its fascinating multi-cultural persona, its superb restaurants, winelands, forest, ocean and mountain experiences and its friendly hospitable residents, it is one of the great travel delights of the modern world. It is also a wonderful place to become enthralled with the vibrant history of Southern Africa, a narrative that has more twists and turns and larger than life protagonists than a Tom Clancy novel. And the narrative is still being threaded today - this World Cup event is an unfolding part of this story. Our varied Experiences in the Cape will make sure you get the most out of what Sir Francis Drake described as "the fairest Cape in the whole circumference of the earth".

Your next two days are at leisure to choose from a host of Experiences around the Cape.

Check out the Experiences tab at the top of this page to get a sense of all the incredible activities that await.

Mount Nelson Exec. Suites (B)

**July 6: Cape Town - Semi Finals Match** - The day is free to enjoy some of the Experiences in and around Cape Town. This evening we'll depart for the Semi Final Match at Green Point Stadium. Match time is 8:30 PM. As a guest of LAFC you will enjoy VIP Seating in the special FIFA Business Seat and a two hour Hospitality event before and after the game. We have VIP security access and parking to ensure minimal inconvenience getting in and out of the game. Special transport will take you to and from the game.

Mount Nelson Exec. Suites (B, D)

**July 7: Cape Town** - You are at leisure to explore the Cape via the wide range of Experiences we offer.

Mount Nelson Exec. Suites (B)

**July 8 through 10: Tintswalo Wildlife Safari** - Transfer early this morning to Cape Town Airport for a flight to Johannesburg and then a short hop into Tintswalo. The Lodge is located in the private Manyeleti Reserve concession, a pristine wilderness area abounding in big game and spectacular bird life, nestled between the Timbavati Private Reserve to the north, Sabi Sand Reserve to the south, and open to the Greater Kruger National Park on its fenceless eastern boundary. The exquisitely appointed main lodge overlooks a waterhole frequented by a large herd of elephant and other big game.

The reserve is unique for its very low vehicle density, and as a result offers the true exclusive safari experience. The Explorer suites are all linked to the main lodge by raised wooden walkways. With an exclusive collection of six, lavish suites plus a regal presidential suite, Tintswalo Safari Lodge offers the discerning traveler an opportunity to let go of the hustle and bustle of busy business life and take time out to relax and become one with nature.

Consistently regarded as one of the finest wildlife lodges in Southern Africa, Tintswalo offers the visitor that special ambience and familiarity of place that transcends where you are from and makes you a part of something quite magical.

Tintswalo Private Reserve (B, L, D)

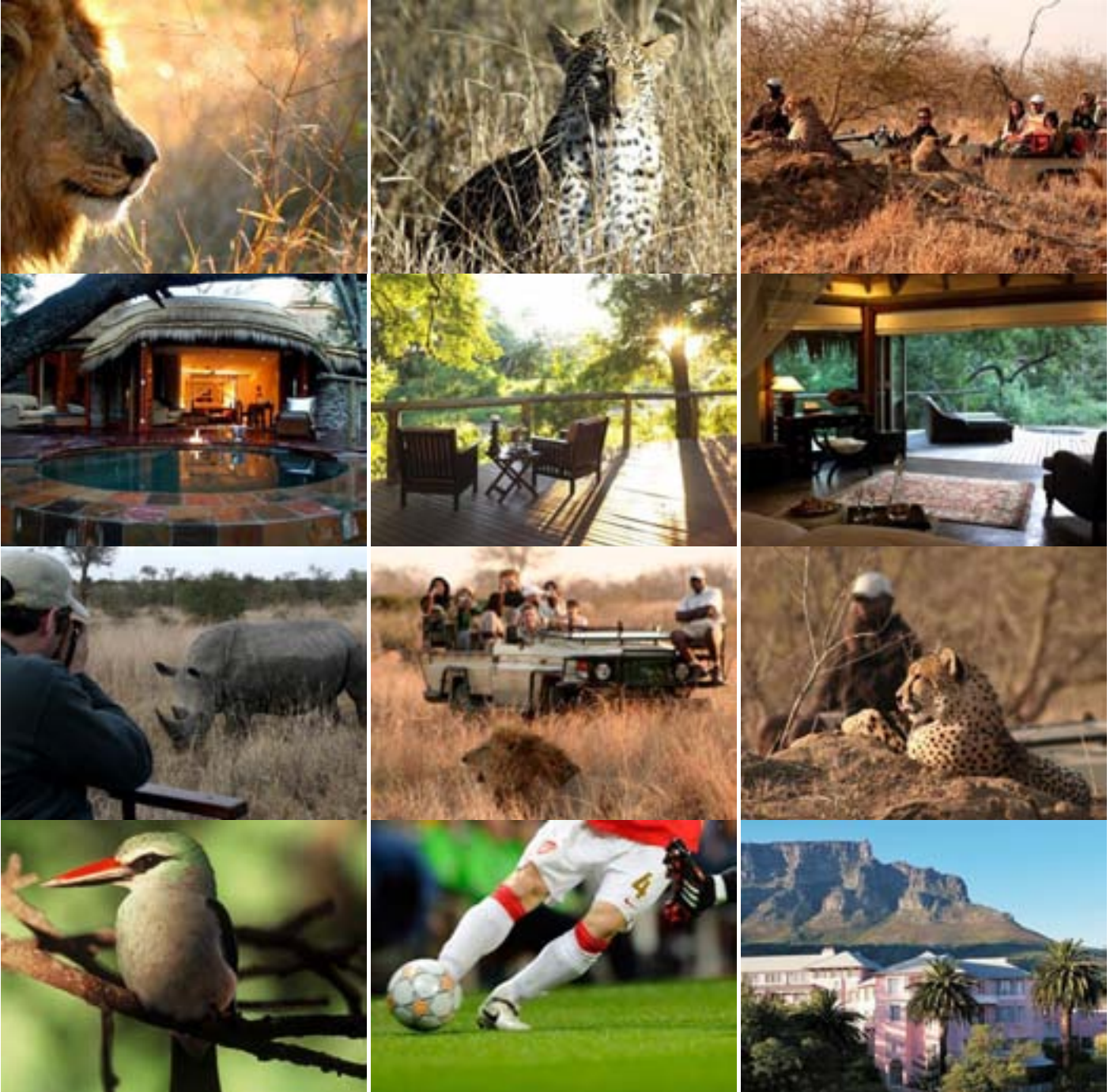
**July 11: Johannesburg - The Finals - Cape Town** - After an early morning game drive depart Tintswalo and fly back to Johannesburg. Our on-site team will meet you and you'll be off on a fascinating tour of Johannesburg and Soweto. The city will be buzzing with anticipation of the huge event taking place this evening. Later in the afternoon we'll head for Soccer City and the ultimate sporting event on the planet - the World Cup Final!. As a guest of LAFC you will enjoy VIP Seating in the special FIFA Business Seat and a two hour Hospitality event before and after the game. We have VIP security access and parking to ensure minimal inconvenience getting in and out of the game. After the game and Hospitality party we'll fly you back to Cape Town for a late arrival at the hotel.

Mount Nelson Exec. Suites (B, D)

**July 12: Cape Town** - You are at leisure to explore the Cape via the wide range of Experiences we offer.

Mount Nelson Exec. Suites (B)

**July 13: Departure** - Transfer to Cape Town Airport for onward flights back to your home city. (B)



## World Cup 2010, South Africa - Departure T12

July 5, 2010 – July 15, 2010

**\$23,049**

**CALL TODAY:**

**Linda Terrill, Travel Advisor**

Luxury Hotel Specialist & Accredited Virtuoso Consultant  
Independent Associate, Sterling Brownell Travel, A Virtuoso Agency

**800-863-9067**

### Trip Highlights

- Five Star Hotels in South Africa
- A premier wildlife safari experience in Tintswalo - one of the finest lodges in Southern Africa
- Invitations to attend 3 guaranteed late round matches including two Semi Finals match and the Final in the VIP FIFA Business Seat section as a guest of LAFC with Hospitality Party before and after each match
- Select from a range of the finest South African touring Experiences on a day-by-day basis before you depart or even while you are in country.
- Dedicated on-site team at your disposal to look after you on an individual basis while in South Africa

### Full Description

You are invited to attend the World Cup 2010 in South Africa!

For the first time ever, the continent of Africa is hosting the world's most prestigious global sporting event - the World Cup. South Africa, with its breathtaking natural beauty, vibrant modern cities and a wildly enthusiastic young nation eager to show you the time or your life, welcomes you to this singular event where the world's best football (soccer) teams will battle it out under the magnificent African skies for the ultimate football accolade: "2010 World Champions".

This unique trip includes all the elements that make this simply the very best way to experience this phenomenal event; The finest hotels, the very best three night safari experience with Tintswalo and VIP seating at the matches together with a two hour Hospitality party before and after each match as the special guests of LAFC, the home grown Foundation in Pasadena, CA. LAFC is doing inspiring things in Southern Africa and back here in the US to bring sporting opportunities to young people. Our team here in the US will ensure that the planning of your trip will be easy and trouble free and our team on the ground in South Africa will cater to your every need and ensure a World Cup African experience to exceed your wildest expectations!

### Included:

- All accommodation on a two person sharing basis as per the itinerary
- Three night Safari with Tintswalo including all air transfers - includes all meals, drinks and laundry.
- Invitations to the matches as indicated on the itinerary in VIP FIFA Business Seats as guests of LAFC with Hospitality Party for two hours before and after each match
- All transport services and guide services as indicated in the itinerary
- All internal air transportation in South Africa including match day flights where matches are being played in a city other than the one where we have accommodation that day
- All Meals as per the itinerary indicated as B, L, D
- Services of On-Site team in South Africa to handle any requests or issues while in country

### Not Included:

- International Air fares from your home city and return
- Gratuities
- Meals not indicated as (B,L,D) in the itinerary
- Hotel incidentals such as telephone, in room dining, mini bar and laundry (outside of Tintswalo camps).
- Optional Match tickets for matches other than those indicated in the itinerary

## Day by Day Itinerary

**July 5: Cape Town** - Arrive Cape Town. Our on-site team will meet you and transfer you to your hotel.

Tintswalo Atlantic

**July 6: Cape Town - Semi Finals Match** - Cape Town is always the highlight of a trip to Southern Africa. With its breathtaking scenery, its fascinating multi-cultural persona, its superb restaurants, winelands, forest, ocean and mountain experiences and its friendly hospitable residents, it is one of the great travel delights of the modern world. It is also a wonderful place to become enthralled with the vibrant history of Southern Africa, a narrative that has more twists and turns and larger than life protagonists than a Tom Clancy novel. And the narrative is still being threaded today - this World Cup event is an unfolding part of this story. Our varied Experiences in the Cape will make sure you get the most out of what Sir Francis Drake described as "the fairest Cape in the whole circumference of the earth".

Later this evening attend the Semi Final match at Green Point Stadium. Match time is 8:30 PM. As a guest of LAFC you will enjoy VIP Seating in the special FIFA Business Seat and a two hour Hospitality event before and after the game. We have VIP security access and parking to ensure minimal inconvenience getting in and out of the game. One of the most artistic football venues in South Africa, the newly-built Green Point Stadium is situated in one of the much sought-after areas in the city of Cape Town. Special transport will take you to and from the game.

Tintswalo Atlantic (B, D)

**July 7: Cape Town - Durban - Semi Finals Match** - The morning is free to enjoy some of the Experiences in and around Cape Town. This afternoon we'll fly to Durban to attend the last Semi Final match. Match time is 8:30 PM. As a guest of LAFC you will enjoy VIP Seating in the special FIFA Business Seat and a two hour Hospitality event before and after the game. We have VIP security access and parking to ensure minimal inconvenience getting in and out of the game. After the game and Hospitality party we'll fly you back to Cape Town for a late arrival at the hotel.

Tintswalo Atlantic (B, D)

**July 8 through 10: Cape Town** - It's three days to the Finals! You're next three days are at leisure to explore the Cape via the wide range of Experiences we offer.

Tintswalo Atlantic (B)

**July 11: Soccer City - World Cup Final** - Later this morning we'll fly to Johannesburg check into our hotel. We'll take a fascinating tour of Johannesburg and Soweto. The city will be buzzing with anticipation of the huge event taking place this evening. Later in the afternoon we'll head for Soccer City and the ultimate sporting event on the planet - the World Cup Final! As a guest of LAFC you will enjoy VIP Seating in the special FIFA Business Seat and a two hour Hospitality event before and after the game. We have VIP security access and parking to ensure minimal inconvenience getting in and out of the game. After the match and Hospitality party we'll return to the hotel.

D'Oreale Grande Hotel (B, D)

**July 12 through 14: Tintswalo Wildlife Safari** - Transfer early this morning to Johannesburg and then a short hop into Tintswalo. The Lodge is located in the private Manyeleti Reserve concession, a pristine wilderness area abounding in big game and spectacular bird life, nestled between the Timbavati Private Reserve to the north, Sabi Sand Reserve to the south, and open to the Greater Kruger National Park on its fenceless eastern boundary. The exquisitely appointed main lodge overlooks a waterhole frequented by a large herd of elephant and other big game.

The reserve is unique for its very low vehicle density, and as a result offers the true exclusive safari experience. The Explorer suites are all linked to the main lodge by raised wooden walkways. With an exclusive collection of six, lavish suites plus a regal presidential suite, Tintswalo Safari Lodge offers the discerning traveler an opportunity to let go of the hustle and bustle of busy business life and take time out to relax and become one with nature.

Consistently regarded as one of the finest wildlife lodges in Southern Africa, Tintswalo offers the visitor that special ambience and familiarity of place that transcends where you are from and makes you a part of something quite magical.

Tintswalo Private Reserve (B, L, D)

**July 15: Departure** - After breakfast transfer to Hoedspruit airport and Fly to Johannesburg and connect with your onward flights back to your home city. (B)